

## VidiStar DICOM Conformance Statement

---

VidiStar DICOM Conformance Statement  
Version 1.3.0  
August 1, 2019

## VidiStar DICOM Conformance Statement

### DICOM Conformance Statement

Version: 1.3.0

Preface .....	6
Chapter 1 - VidiStar DICOM Service/archive v 3.7.X .....	7
1.1. Overview .....	7
1.2. Introduction .....	10
1.2.1. Revision History .....	10
1.2.2. Audience .....	10
1.2.3. Remarks .....	10
1.2.4. Definitions, Terms and Abbreviations .....	11
1.2.5. References .....	11
1.3. Networking .....	12
1.3.1. Implementation Model .....	12
1.3.1.1. Application Data Flow .....	12
1.3.1.2. Functional Definition of AEs .....	15
1.3.1.2.1. Functional Definition of VidiStar DICOM Service/archive Storage Server Application Entity .....	15
1.3.1.2.2. Functional Definition of VidiStar DICOM Service/archive Query/Retrieve Server Application Entity .....	15
1.3.1.2.3. Functional Definition of VidiStar DICOM Service/archive Modality Worklist Server Application Entity .....	15
1.3.1.2.4. Functional Definition of VidiStar DICOM Service/archive MPPS Manager Application Entity .....	16
1.3.1.2.5. Functional Definition of VidiStar DICOM Service/archive IAN/SCN Application Entity .....	16
1.3.1.2.6. WADO - RS .....	16
1.3.1.2.7. WADO - URI .....	16
1.3.1.3. Sequencing of Real-World Activities .....	16
1.3.2. AE Specifications .....	16
1.3.2.1. VidiStar DICOM Service/archive Storage Server Application Entity Specification .....	16
1.3.2.1.1. SOP Classes .....	16
1.3.2.1.2. Association Establishment Policy .....	19
1.3.2.1.2.1. General .....	19
1.3.2.1.2.2. Number of Associations .....	19
1.3.2.1.2.3. Asynchronous Nature .....	19
1.3.2.1.2.4. Implementation Identifying Information .....	19
1.3.2.1.3. Association Initiation Policy .....	19

## VidiStar DICOM Conformance Statement

1.3.2.1.3.1. Activity - Send Storage Commitment Notification over new Association .....	19
1.3.2.1.3.1.1. Description and Sequencing of Activities.....	20
1.3.2.1.3.1.1.1. Proposed Presentation Contexts.....	20
1.3.2.1.3.1.1.1.1. SOP Specific Conformance .....	20
1.3.2.1.3.1.1.1.1.1. Specific Conformance for Verification SOP Class .....	20
1.3.2.1.3.1.1.1.1.2. Specific Conformance for Storage Commitment SOP Classes .....	20
1.3.2.1.4. Association Acceptance Policy .....	20
1.3.2.1.4.1. Activity - Receive Images and Storage Commitment Requests .....	20
1.3.2.1.4.1.1. Description and Sequencing of Activities.....	20
1.3.2.1.4.1.2. Accepted Presentation Contexts.....	21
1.3.2.1.4.1.3. SOP Specific Conformance .....	23
1.3.2.1.4.1.3.1. Specific Conformance for Verification SOP Class .....	23
1.3.2.1.4.1.3.2. Specific Conformance for Storage SOP Classes.....	24
1.3.2.1.4.1.3.2.1. Storage Server AE C-STORE Response.....	25
1.3.2.1.4.1.3.2.2. Storage Server AE Storage Service Communication Failure Reasons .....	25
1.3.2.1.4.1.3.2.3. Specific Conformance for Storage Commitment SOP Class.....	26
1.3.2.2. VidiStar DICOM Service/archive Query/Retrieve Server Application Entity Specification	29
1.3.2.2.1. SOP Classes .....	29
1.3.2.2.2. Association Establishment Policy .....	32
1.3.2.2.2.1. General.....	32
1.3.2.2.2.2. Number of Associations.....	32
1.3.2.2.2.3. Asynchronous Nature.....	32
1.3.2.2.2.4. Implementation Identifying Information .....	32
1.3.2.2.3. Association Initiation Policy .....	32
1.3.2.2.3.1. Activity - Send Images Requested by an External Peer AE .....	32
1.3.2.2.3.1.1. Description and Sequencing of Activities.....	32
1.3.2.2.3.1.1.1. Proposed Presentation Contexts.....	33
1.3.2.2.4. Association Acceptance Policy .....	36
1.3.2.2.4.1. Activity - Handling Query and Retrieval Requests.....	36
1.3.2.2.4.1.1. Description and Sequencing of Activities.....	36
1.3.2.2.4.1.2. Accepted Presentation Contexts.....	37
1.3.2.2.4.1.3. SOP Specific Conformance .....	37
1.3.2.2.4.1.3.1. Specific Conformance for Verification SOP Class .....	37
1.3.2.2.4.1.3.2. Specific Conformance for Query SOP Classes.....	38
1.3.2.2.4.1.3.3. Specific Conformance for Query SOP Classes.....	41
1.3.2.3. VidiStar DICOM Service/archive Query/Retrieve User Application Entity Specification ..	43

## VidiStar DICOM Conformance Statement

1.3.2.3.1. SOP Classes .....	43
1.3.2.3.2. Association Establishment Policy .....	44
1.3.2.3.2.1. General .....	44
1.3.2.3.2.2. Number of Associations .....	44
1.3.2.3.2.3. Implementation Identifying Information .....	44
1.3.2.3.3. Association Initiation Policy .....	44
1.3.2.3.3.1. Activity – FIND SCU .....	44
1.3.2.3.3.1.1. Description and Sequencing of Activities .....	44
1.3.2.3.3.1.1.1. Proposed Presentation Contexts .....	45
1.3.2.3.3.2. Activity – MOVE SCU .....	48
1.3.2.3.3.2.1. Description and Sequencing of Activities .....	48
1.3.2.3.3.2.1.1. Proposed Presentation Contexts .....	49
1.3.2.3.4. Association Acceptance Policy .....	50
1.3.2.4. VidiStar DICOM Service/archive Modality Worklist Server Application Entity Specification .....	51
1.3.2.4.1. SOP Classes .....	51
1.3.2.4.2. Association Establishment Policy .....	51
1.3.2.4.2.1. General .....	51
1.3.2.4.2.2. Number of Associations .....	52
1.3.2.4.2.3. Asynchronous Nature .....	52
1.3.2.4.2.4. Implementation Identifying Information .....	52
1.3.2.4.4. Association Acceptance Policy .....	52
1.3.2.4.4.1. Activity - External Peer AE requests MWL query .....	52
1.3.2.4.4.2. Description and Sequencing of Activities .....	52
1.3.2.4.4.4. SOP Specific Conformance .....	54
1.3.2.4.4.5. Specific Conformance for Verification SOP Class .....	54
1.3.2.4.4.6. Specific Conformance for Modality Worklist SOP Class .....	54
1.3.2.4.4.6.1. Modality Worklist Server AE C-STORE Response .....	54
1.3.2.4.4.6.2. Modality Server AE Storage Service Communication Failure Reasons .....	55
1.3.2.5. WADO -RS Retrieve Study .....	55
1.3.2.6. WADO -RS Retrieve Series .....	56
1.3.2.7. WADO -URI Retrieve Rendered Imaging Document Set .....	56
1.3.2.8. Retrieve Summary Information for Display .....	57
1.3.2.8. Retrieve Document for Display .....	58
1.3.3.1. Supported Communication Stacks .....	60
1.3.3.1.1. TCP/IP Stack .....	60

## VidiStar DICOM Conformance Statement

---

1.3.3.2. Physical Network Interface.....	60
1.3.4. Configuration .....	60
1.3.4.1. AE Title/Presentation Address Mapping.....	60
1.3.4.1.1. Local AE Titles .....	60
1.3.4.1.2. Remote AE Title.....	60
1.3.4.2. Parameters.....	60
1.5. Support of Extended Character Sets .....	64
1.6. Security .....	64
1.6.1. Security Profiles.....	64
1.6.2. Association Level Security .....	64
1.6.3. Application Level Security .....	64
1.7. Annexes.....	64
1.7.2. Usage of Attributes from received IOD's .....	64
1.7.3. Attribute Mapping.....	64
1.7.4. Coerced/Modified Fields .....	64

## Preface

VidiStar's DICOM service is an implementation of an Integrating the Healthcare Enterprise (IHE) compliant Image Archive and Report Repository. This includes the capabilities to store and retrieve various kinds of DICOM Objects such as:

1. Images from multiple modalities;
2. Grayscale Presentation States (GSPS), which specifies the presentations of images as grayscaling, zoom, text and graphical annotations;
3. Key Objects (KO), which specifies a particular selection of images for a specified reason and with an attached note;
4. Structured Reports (SR);
5. to process HL7 notification messages from the Order Filler, about Procedure Scheduling, Procedure Up-dates and Patient Information Updates; and,
6. to process DICOM Modality Performed Procedure Step [MPPS] messages from modalities and forward them to the Order Filler.

VidiStar's DICOM service is a server application. Its Web-based User Interface is intended for system configuration and monitoring by system administrators.

# Chapter 1 - VidiStar DICOM Service/archive v 3.7.X

## *DICOM Conformance Statement*

### **1.1. Overview**

VidiStar DICOM Service/archive is a system that provides services for safe storage and retrieve of DICOM evidence object such Images, Key Image Notes, Presentation States, Structured Reports and others.

VidiStar DICOM Service/archive supports the following IHE Integration Profiles:

- Access to Radiology Information
- Consistent Presentation of Images
- Evidence Documents
- Key Image Note
- Patient Information Reconciliation
- Simple Image and Numeric Report
- Scheduled Workflow
- Reporting Workflow
- Post-Processing Workflow
- Retrieve Information for Display
- Basic Security
- Audit Trail and Node Authentication

VidiStar DICOM Service/archive supports the following network services:

**Table 1.1 NETWORK SERVICES**

<b>Networking SOP Classes</b>	<b>User of Service (SCU)</b>	<b>Provider of Service (SCP)</b>
<i>Transfer</i>		
US Image Storage	Yes	Yes
US Multi-frame Storage	Yes	Yes
Computed Radiography Image Storage	Yes	Yes
Digital X-Ray Image Storage - For Presentation	Yes	Yes
Digital X-Ray Image Storage - For Processing	Yes	Yes
Digital Mammography X-Ray Image Storage - For Presentation	Yes	Yes
Digital Mammography X-Ray Image Storage - For Preprocessing	Yes	Yes
Digital Intra-oral X-Ray Image Storage - For Presentation	Yes	Yes
Digital Intra-oral X-Ray Image Storage - For Processing	Yes	Yes
MR Image Storage	Yes	Yes
Enhanced MR Image Storage	Yes	Yes
Secondary Capture Image Storage	Yes	Yes
X-Ray Angiographic Image Storage	Yes	Yes
X-Ray Radiofluoroscopic Image Storage	Yes	Yes
Nuclear Medicine Image Storage	Yes	Yes
VL Endoscopic Image Storage	Yes	Yes

VL Microscopic Image Storage	Yes	Yes
VL Slide-Coordinates Microscopic Image Storage	Yes	Yes
VL Photographic Image Storage	Yes	Yes



<b>Networking SOP Classes</b>	<b>User of Service (SCU)</b>	<b>Provider of Service (SCP)</b>
Positron Emission Tomography Image Storage	Yes	Yes
RT Image Storage	Yes	Yes
Raw Data Storage	Yes	Yes
Multi-frame Grayscale Byte Secondary Capture Image Storage	Yes	Yes
Multi-frame Grayscale Word Secondary Capture Image Storage	Yes	Yes
Multi-frame Color Secondary Capture Image Storage	Yes	Yes
Grayscale Softcopy Presentation State Storage	Yes	Yes
Hardcopy Grayscale Image Storage SOP Class	Yes	Yes
Hardcopy Color Image Storage SOP Class	Yes	Yes
Basic Text SR	Yes	Yes
Enhanced SR	Yes	Yes
Comprehensive SR	Yes	Yes
Key Object Selection Document	Yes	Yes
Storage Commitment Push Model	No	Yes
<i>Workflow Management</i>		
Modality Worklist - FIND	No	Yes
Modality Performed Procedure Step	Yes	Yes
Instance Availability Notification	Yes	No
Basic Study Content Notification	Yes	No
General Purpose Worklist Information Model – FIND	No	Yes
General Purpose Scheduled Procedure Step	No	Yes
General Purpose Performed Procedure Step	No	Yes
General Purpose Worklist Management Meta	No	Yes
<i>Query/Retrieve</i>		
Patient Root Q/R - FIND	Yes	Yes
Patient Root Q/R - MOVE	Yes	Yes
Study Root Q/R - FIND	Yes	Yes
Study Root Q/R - MOVE	Yes	Yes
Patient/Study Only Q/R - FIND	Yes	Yes
Patient/Study Only Q/R - MOVE	Yes	Yes
<i>Connectivity Verification</i>		
Verification	Yes	Yes
<i>Print Management</i>		
Basic Grayscale Print Management	Yes	No
Basic Color Print Management	Yes	No
<i>WADO</i>		
WADO – Retrieve Study	No	Yes
WADO – Retrieve Series	No	Yes
WADO – URI	No	Yes

## **1.2. Introduction**

### **1.2.1. Revision History**

#### **Revision History**

---

Revision 21 May 2008 – Initial Draft	Craig Walker
Revision 23 May 2012 – Upgrade to VidiStar 3.6.X	Michael Kostrzewa
Revision 04 Aug 2012 – Upgrade to VidiStar 3.7.X	Michael Kostrzewa

### **1.2.2. Audience**

This document is intended for hospital staff, health system integrators, software designers or implementers. It is assumed that the reader has a working understanding of DICOM.

### **1.2.3. Remarks**

DICOM, by itself, does not guarantee interoperability. However, the Conformance Statement facilitates a first-level validation for interoperability between different applications supporting the same DICOM functionality. This Conformance Statement is not intended to replace validation with other DICOM equipment to ensure proper exchange of information intended.

The scope of this Conformance Statement is to facilitate communication with VidiStar's DICOM Service and other vendors' medical equipment. The Conformance Statement should be read and understood in conjunction with the DICOM Standard (DICOM). However, by itself it is not guaranteed to ensure the desired interoperability and successful interconnectivity with existing DICOM systems.

The user should be aware of the following important issues:

- The comparison of different conformance statements is the first step towards assessing interconnectivity between VidiStar's DICOM Service and non-VidiStar software or equipment;
- Test procedures should be defined to validate the desired level of connectivity; and,
- The DICOM standard will evolve to meet the users' future requirements. VidiStar is actively involved in developing the standard further and therefore reserves the right to make changes to its products or to discontinue its delivery.

## 1.2.4. Definitions, Terms and Abbreviations

Definitions, terms and abbreviations used in this document are defined within the different parts of the DICOM standard.

Abbreviations and terms are as follows:

AE	DICOM Application Entity
AET	Application Entity Title
DICOM	Digital Imaging and Communications in Medicine
DIMSE	DICOM Message Service Element
GSDP	Grayscale Standard Display Function
HIS/RIS	Hospital Information System / Radiology Information System
IHE	Integrating the Healthcare Enterprise
IHE-TF	Integrating the Healthcare Enterprise Technical Framework
IAN	Instance Availability Notification
IOD	Information Object Definition
ISO	International Standard Organization
PDU	DICOM Protocol Data Unit
LUT	Look-up Table
MPPS	Modality Performed Procedure Step
MWL	Modality Worklist
P-LUT	Presentation Look-up Table
Q/R	Query Retrieve
SCP	Service Class Provider
SCU	Service Class User
SCN	Study Content Notification
SOP	DICOM Service-Object Pair
TCP/IP	Transmission Control Protocol/Internet Protocol
TLS	Transport Layer Security
UID	Unique Identifier
VR	Value Representation

## 1.2.5. References

DICOM	Digital Imaging and Communications in Medicine (DICOM), NEMA PS 3.1- 3.16, 2001
IHE-TF	Integrating the Healthcare Enterprise Technical Framework, HIMSS/RSNA, Revision 5.4, 2002

## 1.3. Networking

### 1.3.1. Implementation Model

#### 1.3.1.1. Application Data Flow

VidiStar DICOM Service/archive is logically divided in 4 different DICOM Application Entities: Storage Server, Query/Retrieve Server, MPPS Manager and IAN/SCN Service.

The Application Entities detailed in the Application Data Flow Diagram are all Java Enterprise Application and are designed to run in a J2EE compliant container (i.e. JBoss) on any Java Virtual Machine 1.6 capable Operating System.

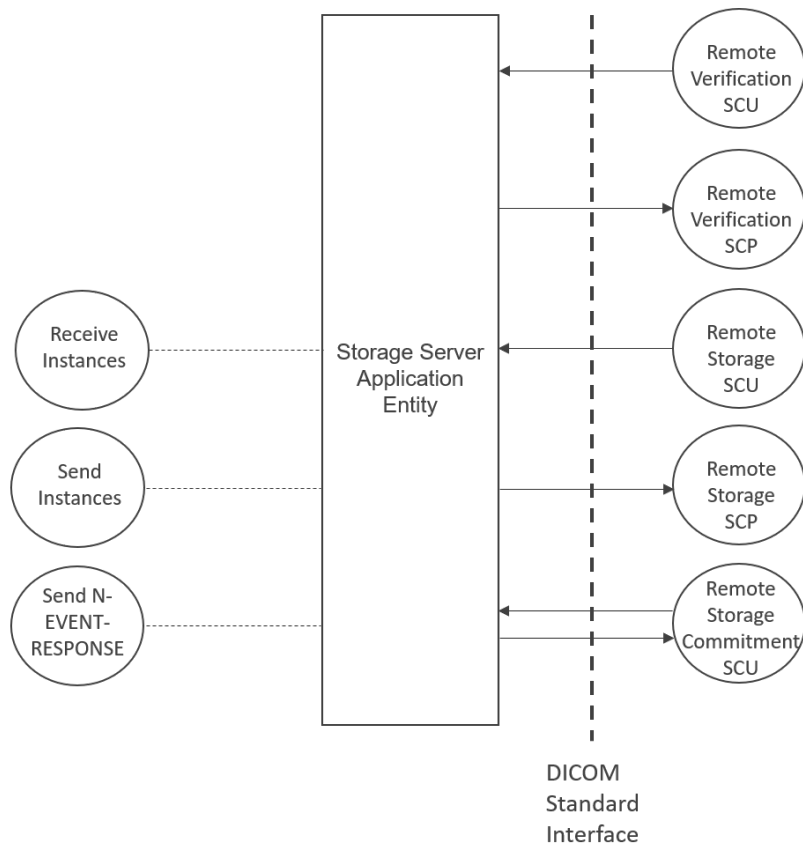
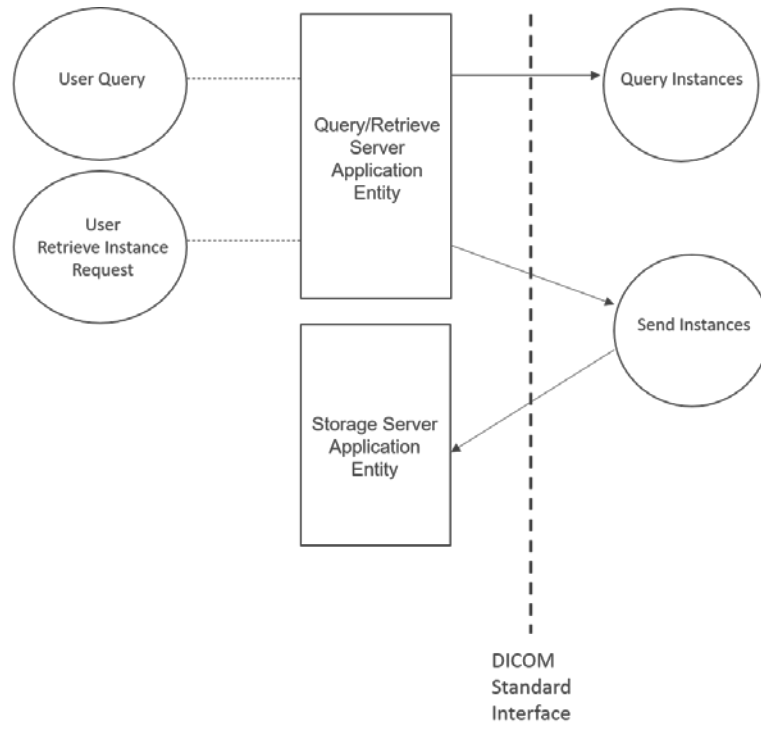
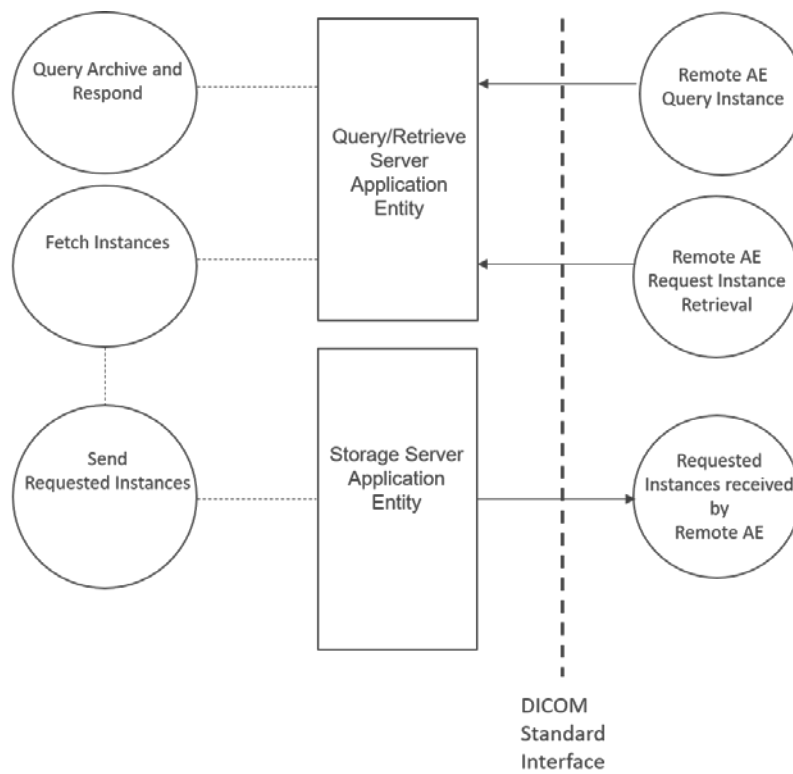


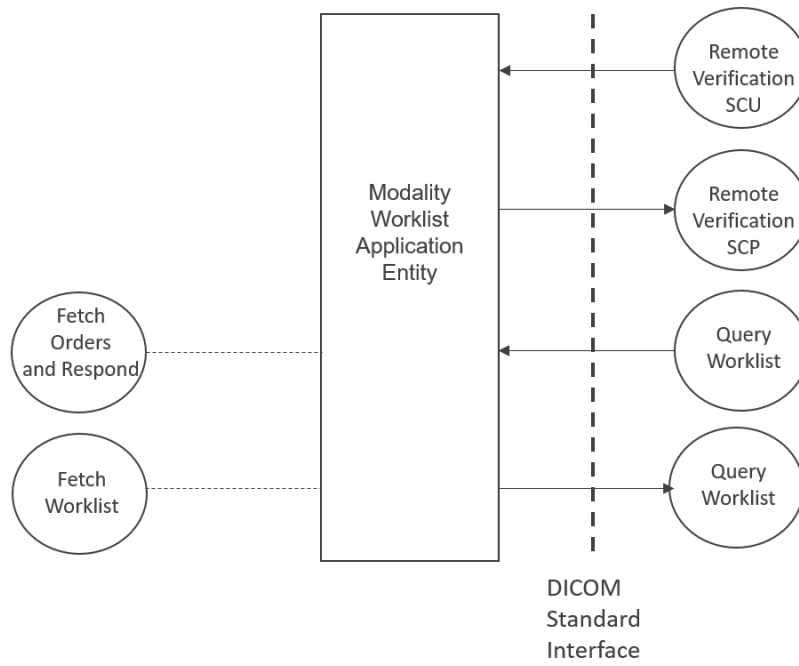
Figure 1.1. Storage Server



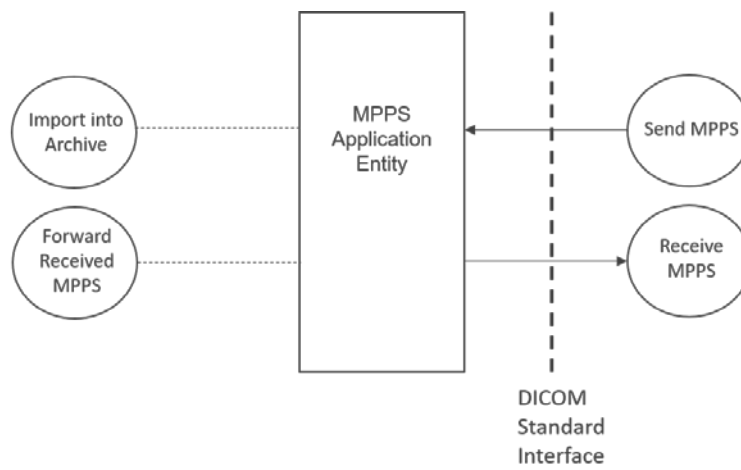
**Figure 1.2. Query/Retrieve Server as SCU**



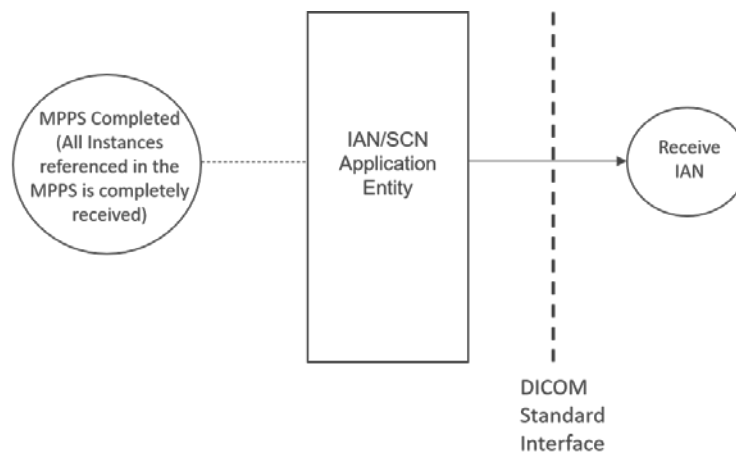
**Figure 1.3. Query/Retrieve Server as SCP**



**Figure 1.4. Modality Worklist Server**



**Figure 1.4. MPPS SCU/SCP**



**Figure 1.4. IAN SCU/SCP**

The Storage Server AE implements the DICOM Storage Service Class, the Verification Service Class and the DICOM Storage Commitment Service as SCU and as SCP.

The Query/Retrieve Server AE implements Query/Retrieve Services as SCU and SCP

The Modality Worklist Server AE implements the Verification Service Class and the Basic Worklist Management Service Class as SCU and SCP

The MPPS manager AE implements the DICOM Modality Performed Procedure Step Service as SCU and SCP

The IAN/SCN service implements the DICOM Instance Availability Notification and the Basic Study Content Notification as an SCU.

### **1.3.1.2. Functional Definition of AEs**

#### **1.3.1.2.1. Functional Definition of VidiStar DICOM Service/archive Storage Server Application Entity**

The VidiStar DICOM Service/archive Storage Server Application Entity waits for another application to connect at the presentation address configured for its Application Entity Title. When another application connects, the STORAGE-SCP AE expects it to be a DICOM application.

The STORAGE-SCP AE will accept Associations with Presentation Contexts for SOP Classes of the Verification, Storage, and Storage Commitment Service Classes.

DICOM Instances received in a Storage Request are filed on local (attached/mounted) file system(s). A subset of attributes from received Instances is also stored in records local database.

#### **1.3.1.2.2. Functional Definition of VidiStar DICOM Service/archive Query/Retrieve Server Application Entity**

The VidiStar DICOM Service/archive Query/Retrieve Server Application Entity waits for another application to connect at the presentation address configured for its Application Entity Title. When another application connects, the Storage Server AE expects it to be a DICOM application.

The Query/Retrieve Server AE will accept Associations with Presentation Contexts for SOP Classes of the Verification and Query/Retrieve Service Classes.

Once received a Retrieve (Move) request, Query/Retrieve Server AE will initiate a new association and send the requested instances to the Move Destination AE.

#### **1.3.1.2.3. Functional Definition of VidiStar DICOM Service/archive Modality Worklist Server Application Entity**

The VidiStar DICOM Service/archive Modality Worklist Server Application Entity waits for another application to connect at the presentation address configured for its Application Entity Title. When another application connects, the Modality Worklist Server AE expects it to be a DICOM application.

The Modality Worklist Server AE will accept Associations with Presentation Contexts for SOP Classes of the Verification and Modality Worklist Service Classes.

When a Modality Worklist Find request is received, Modality Worklist Server AE will query the local database for a list of Scheduled Procedure Steps matching the query and will return a pending C-Find response for each match. Before patient and order information can be included in response to a Modality Worklist query, Modality Worklist items must be created by ...

#### **1.3.1.2.4. Functional Definition of VidiStar DICOM Service/archive MPPS Manager Application Entity**

The VidiStar DICOM Service/archive MPPS Manager Application Entity waits for another application to connect at the presentation address configured for its Application Entity Title. When another application connects, the MPPS Manager AE expects it to be a DICOM application.

The MPPS Manager AE will accept Associations with Presentation Contexts for SOP Classes of the Verification and Modality Performed Procedure Step Service Classes.

The MPPS Manager stores the received MPPS instances in the local database and can be configured to forward them to a remote MPPS SCP.

#### **1.3.1.2.5. Functional Definition of VidiStar DICOM Service/archive IAN/SCN Application Entity**

The VidiStar DICOM Service/archive IAN/SCN Application Entity notifies a configurable list of remote DICOM peer application, about new instances received by the Storage Server AE, triggered by the release of the association to the Storage Server AE.

It will initiate a new association to the remote AE which shall be notified, offering a Presentation Context for the Instance Availability Notification SOP Class or for the Basic Study Content Notification SOP Class or for both - dependent of its configuration and perform the notification for each study received by the Storage Server AE in the released association, using the accepted service.

#### **1.3.1.2.6. WADO - RS**

Provides access to the metadata, the bulk data or the whole DICOM Objects, of a whole Study or Series or an individual object via HTTP GET requests.

#### **1.3.1.2.7. WADO - URI**

Provides access to individual DICOM Objects - as DICOM file or rendered to non-DICOM media types for display - via HTTP GET requests

#### **1.3.1.3. Sequencing of Real-World Activities**

Note that the only constraint is for the Composite SOP Instance to be received prior to the other events. All the other events (even MPPS Send) are not constrained and can happen at any time.

### ***1.3.2. AE Specifications***

#### **1.3.2.1. VidiStar DICOM Service/archive Storage Server Application Entity Specification**

##### **1.3.2.1.1. SOP Classes**

The list of accepted SOP classes is configurable, any class can be configured to be accepted for storage.



VidiStar DICOM Service/archive Storage Server Application Entity provides Standard Conformance to the following SOP Classes:

**Table 1.2. SOP Classes for VidiStar DICOM Service/archive Storage Server AE**

SOP Class Name	SOP Class UID	SCU	SCP
Verification SOP Class	1.2.840.10008.1.1	Yes	Yes
Storage Commitment Push Model SOP Class	1.2.840.10008.1.20.1	Yes	Yes
Hardcopy Grayscale Image Storage SOP Class	1.2.840.10008.5.1.1.29	No	Yes
Hardcopy Color Image Storage SOP Class	1.2.840.10008.5.1.1.30	No	Yes
Computed Radiography Image Storage	1.2.840.10008.5.1.4.1.1.1	No	Yes
Digital X-Ray Image Storage - For Presentation	1.2.840.10008.5.1.4.1.1.1.1	No	Yes
Digital X-Ray Image Storage - For Processing	1.2.840.10008.5.1.4.1.1.1.1.1	No	Yes
Digital Mammography X-Ray Image Storage - For Presentation	1.2.840.10008.5.1.4.1.1.1.2	No	Yes
Digital Mammography X-Ray Image Storage - For Processing	1.2.840.10008.5.1.4.1.1.1.2.1	No	Yes
Digital Intra-oral X-Ray Image Storage - For Presentation	1.2.840.10008.5.1.4.1.1.1.3	No	Yes
Digital Intra-oral X-Ray Image Storage - For Processing	1.2.840.10008.5.1.4.1.1.1.3.1	No	Yes
CT Image Storage	1.2.840.10008.5.1.4.1.1.2	No	Yes
US Multi-frame Image (retired)	1.2.840.10008.5.1.4.1.1.3		
Ultrasound Multi-frame Image Storage	1.2.840.10008.5.1.4.1.1.3.1	No	Yes
MR Image Storage	1.2.840.10008.5.1.4.1.1.4	No	Yes
Enhanced MR Image Storage	1.2.840.10008.5.1.4.1.1.4.1	No	Yes
NM Image (retired)	1.2.840.10008.5.1.4.1.1.5	No	Yes
US Image (retired)	1.2.840.10008.5.1.4.1.1.6	No	Yes
Ultrasound Image Storage	1.2.840.10008.5.1.4.1.1.6.1	No	Yes
Secondary Capture Image Storage	1.2.840.10008.5.1.4.1.1.7	No	Yes
Multi-frame Single Bit Secondary Capture Image Storage SOP Class	1.2.840.10008.5.1.4.1.1.7.1		
Multi-frame Grayscale Byte Secondary Capture Image Storage	1.2.840.10008.5.1.4.1.1.7.2	No	Yes
Multi-frame Grayscale Word Secondary Capture Image Storage	1.2.840.10008.5.1.4.1.1.7.3	No	Yes
Multi-frame Color Secondary Capture Image Storage	1.2.840.10008.5.1.4.1.1.7.4	No	Yes
Stand Alone Overlay Storage	1.2.840.10008.5.1.4.1.1.8	No	Yes
Stand Alone Curve	1.2.840.10008.5.1.4.1.1.9	No	Yes
Standalone Modality LUT Storage (Retired)	1.2.840.10008.5.1.4.1.1.10	No	Yes
Standalone VOI LUT Storage SOP Class (Retired)	1.2.840.10008.5.1.4.1.1.11	No	Yes
X-Ray Angiographic Image Storage	1.2.840.10008.5.1.4.1.1.12.1	No	Yes
X-Ray Radiofluoroscopic Image Storage	1.2.840.10008.5.1.4.1.1.12.2	No	Yes
Nuclear Medicine Image Storage	1.2.840.10008.5.1.4.1.1.20	No	Yes
Raw Data Storage	1.2.840.10008.5.1.4.1.1.66	No	Yes
VL Endoscopic Image Storage	1.2.840.10008.5.1.4.1.1.77.1.1	No	Yes
VL Microscopic Image Storage	1.2.840.10008.5.1.4.1.1.77.1.2	No	Yes
VL Slide-Coordinates Microscopic Image Storage	1.2.840.10008.5.1.4.1.1.77.1.3	No	Yes
VL Photographic Image Storage	1.2.840.10008.5.1.4.1.1.77.1.4	No	Yes
Positron Emission Tomography Image Storage	1.2.840.10008.5.1.4.1.1.128	No	Yes
RT Image Storage	1.2.840.10008.5.1.4.1.1.481.1	No	Yes
RT Dose Storage SOP Class	1.2.840.10008.5.1.4.1.1.481.2	No	Yes
RT Structure Set Storage SOP Class	1.2.840.10008.5.1.4.1.1.481.3	No	Yes
RT Plan Storage SOP Class	1.2.840.10008.5.1.4.1.1.481.5	No	Yes
General ECG Waveform Storage SOP Class	1.2.840.10008.5.1.4.1.1.9.1.2	No	Yes
Grayscale Softcopy Presentation State Storage SOP Class	1.2.840.10008.5.1.4.1.1.11.1	No	Yes
X-ray Angio-graphic Biplane Image	1.2.840.10008.5.1.4.1.1.12.3	No	Yes

Detail SR Storage - Trial (Retired)	1.2.840.10008.5.1.4.1.1.88.3	No	Yes
Basic Text SR	1.2.840.10008.5.1.4.1.1.88.11	No	Yes
Enhanced SR	1.2.840.10008.5.1.4.1.1.88.22	No	Yes
Comprehensive SR	1.2.840.10008.5.1.4.1.1.88.33	No	Yes
Key Object Selection Document	1.2.840.10008.5.1.4.1.1.88.59	No	Yes
Encapsulated PDF Storage	1.2.840.10008.5.1.4.1.1.104.1	No	Yes
Color Softcopy Presentation State Storage	1.2.840.10008.5.1.4.1.1.11.2	No	Yes
Hardcopy Grayscale Image Storage (Retired)	1.2.840.10008.5.1.1.29	No	Yes
Hardcopy Color Image Storage (Retired)	1.2.840.10008.5.1.1.30	No	Yes
Computed Radiography Image Storage	1.2.840.10008.5.1.4.1.1.1	No	Yes

Storage of private SOP classes can also be configured for Storage Server Application Entity

**Table 1.2a. Private SOP Classes for VidiStar DICOM Service/archive Storage Server AE**

SOP Class Name	SOP Class UID	SCU	SCP
Philips Private X-Ray Image Storage	1.3.46.670589.2.3.1.1	No	Yes
Philips Private Reconstructed X-ray Storage	1.3.46.670589.2.4.1.1	No	Yes
Philips Private iE33 3D NEO Presentation State Subpage Storage	1.3.46.670589.2.5.1.1	No	Yes
Philips Private ViewForum 3D Volume New Storage	1.3.46.670589.5.0.1.1	No	Yes
Philips Private ViewForum MR Synthetic Image Storage	1.3.46.670589.5.0.10	No	Yes
Philips Private ViewForum MR Cardio Analysis New Storage	1.3.46.670589.5.0.11.1	No	Yes
Philips Private ViewForum CX Synthetic Image Storage	1.3.46.670589.5.0.12	No	Yes
Philips Private ViewForum Perfusion Storage	1.3.46.670589.5.0.13	No	Yes
Philips Private ViewForum Perfusion Analysis Storage	1.3.46.670589.5.0.14	No	Yes
Philips Private ViewForum 3D Volume Object New Storage	1.3.46.670589.5.0.2.1	No	Yes
Philips Private ViewForum Surface New Storage	1.3.46.670589.5.0.3.1	No	Yes
Philips Private ViewForum MR Cardio New Storage	1.3.46.670589.5.0.8.1	No	Yes
Philips Private ViewForum CT Synthetic Image Storage	1.3.46.670589.5.0.9	No	Yes

## 1.3.2.1.2. Association Establishment Policy

### 1.3.2.1.2.1. General

The VidiStar DICOM Service/archive Storage Server AE can both accept and propose Association Requests. The VidiStar DICOM Service/archive Storage Server AE will accept Association Requests for the Verification, Storage, and Storage Commitment Push Model Services. It will propose Associations only for the Storage and Storage Commitment Push Model Service.

The DICOM standard application context name for DICOM 3.0 is always accepted and proposed.

**Table 1.3 DICOM application context name for VidiStar DICOM Service/archive Storage Server AE**

Application Context Name	1.2.840.10008.3.1.1.1
--------------------------	-----------------------

### 1.3.2.1.2.2. Number of Associations

VidiStar DICOM Service/archive Storage Server can support multiple simultaneous Associations requested by peer AEs. Default is 10. This value can be configured through the attribute "MaxClients" in the Application Server configuration file (i.e. jboss-service.xml for JBoss application server).

**Table 1.4. Number of Associations accepted for VidiStar DICOM Service/archive Storage Server AE**

Maximum number of simultaneous Associations	10 (Configurable)
---	-------------------

### 1.3.2.1.2.3. Asynchronous Nature

VidiStar DICOM Service/archive Storage Server does not support asynchronous communication. Multiple outstanding transactions are not supported. It allows up to one invoked and one performed operation on an Association (it is synchronous). Asynchronous mode of operation is not supported.

**Table 1.5. Asynchronous Nature as SCP for VidiStar DICOM Service Storage Server AE**

Maximum number of outstanding asynchronous transactions	1 (Not Configurable)
---	----------------------

### 1.3.2.1.2.4. Implementation Identifying Information

The implementation information for this Application Entity is:

**Table 1.6. DICOM Implementation Class and Version for VidiStar DICOM Service Storage Server AE**

Implementation Class UID	1.2.40.0.13.1.1
--------------------------	-----------------

## 1.3.2.1.3. Association Initiation Policy

### 1.3.2.1.3.1. Activity - Send Storage Commitment Notification over new Association

### 1.3.2.1.3.1.1. Description and Sequencing of Activities

An Association Request is sent to the peer AE that sent the Storage Commitment Push Model request and upon successful negotiation of the required Presentation Context the outstanding N-EVENT-REPORT is sent.

#### 1.3.2.1.3.1.1.1. Proposed Presentation Contexts

VidiStar DICOM Service/archive Storage Server will propose Presentation Contexts as shown in the following table:

**Table 1.7. Proposed Presentation Contexts by the VidiStar DICOM Service/archive Storage Server AE**

Abstract Syntax		Transfer Syntax			Ext. Role
Name	UID	Name List	UID List	Role	
Verification	1.2.840.10008.1.1	Implicit VR Little Endian	1.2.840.10008.1.2	SCU	None
Storage Commitment Push Model	1.2.840.10008.1.20.1.1	Implicit VR Little Endian	1.2.840.10008.1.2	SCP	None
		Explicit VR Little Endian	1.2.840.10008.1.2.1		

### 1.3.2.1.3.1.1.1.1. SOP Specific Conformance

#### 1.3.2.1.3.1.1.1.1.1. Specific Conformance for Verification SOP Class

Standard conformance is provided to the DICOM Verification Service Class as an SCU. The Verification Service as an SCU is actually only supported as a diagnostic service tool for network communication issues. It can be used to test whether Associations can actually be opened with a peer AE that is issuing Storage Commitment Push Model requests (i.e. to test whether the indicated TCP/IP port and AE Title for sending N-EVENT-REPORT Requests to the peer AE are truly functional).

#### 1.3.2.1.3.1.1.1.1.2. Specific Conformance for Storage Commitment SOP Classes

The associated Activity with the Storage Commitment Push Model service is the communication by the VidiStar DICOM Service/archive Storage Server AE to peer AEs that it has committed to permanently store Composite SOP Instances that have been sent to it.

It thus allows peer AEs to determine whether the VidiStar DICOM Service/archive Storage Server has taken responsibility for the archiving of specific SOP Instances so that they can be flushed from the peer AE system.

### 1.3.2.1.4. Association Acceptance Policy

#### 1.3.2.1.4.1. Activity - Receive Images and Storage Commitment Requests

##### 1.3.2.1.4.1.1. Description and Sequencing of Activities

A remote peer DICOM Application Entity, acting as an Storage SCU, establishes an association with VidiStar DICOM Service/archive Storage Server that accepts these Associations for the purpose of receiving supported SOP Class Instances and Storage Commitment requests.

In the default configuration any Calling and Called AET will be accepted. But the Called AET does not correspond to the actual Storage Server AET, only a Presentation Context for the Verification SOP Class will be accepted and the SCU can only verify the DICOM Association, but cannot invoke any other related DICOM service.

When an association has been established the Sequencing of Real-World Activities is as described in Section 1.3.1.3, “Sequencing of Real-World Activities”.

The Storage Server AE may reject Association attempts as shown in the table below. The Result, Source and Reason / Diag columns represent the values returned in the corresponding fields of an ASSOCIATE-RJ PDU (see PS 3.8, Section 9.3.4).

**Table 1.8. Association Rejection Reasons**

Result	Source	Reason	Description
2 - rejected transient	provider	2 - local-limit exceeded	The (configurable) maximum number of simultaneous associations has been reached. An association request with the same parameters may succeed at a later time.
1 - rejected permanent	user	2 - application context Name NOT supported.	The Association request contained an unsupported Application Context name. An association request with the same parameters will NOT succeed at a later time.
1 - rejected permanent	user	3 – calling AE title not recognized	The Association request contained an unrecognized Calling AE Title. An association request with the same parameters will NOT succeed at a later time unless configuration changes are made.

### 1.3.2.1.4.1.2. Accepted Presentation Contexts

**Table 1.9. Accepted Presentation Contexts for VidiStar DICOM Service/archive Storage Server AE**

Abstract Syntax		Transfer Syntax			Ext.
Name	UID	Name List	UID List	Role	Role
Verification SOP Class	1.2.840.10008.1.1	Implicit VR Little Endian	1.2.840.10008.1.2	SCP	None
Storage Commitment Push Model	1.2.840.10008.1.20.1	Transfer Syntaxes for on-Image Storage Services		SCP	None
Hardcopy Grayscale Image Storage SOP Class	1.2.840.10008.5.1.1.29	Transfer Syntaxes for Image Storage Services		SCP	None
Hardcopy Color Image Storage SOP Class	1.2.840.10008.5.1.1.30	Transfer Syntaxes for Image Storage Services		SCP	None
Computed Radiography Image Storage	1.2.840.10008.5.1.4.1.1.1	Transfer Syntaxes for Image Storage Services		SCP	None
Digital X-Ray Image Storage - For Presentation	1.2.840.10008.5.1.4.1.1.1.1	Transfer Syntaxes for Image Storage Services		SCP	None
Digital X-Ray Image Storage - For Processing	1.2.840.10008.5.1.4.1.1.1.1.1	Transfer Syntaxes for Image Storage Services		SCP	None

Abstract Syntax		Transfer Syntax			Ext.
Name	UID	Name List	UID List	Role	Role
Digital Mammography X-Ray Image Storage - For Presentation	1.2.840.10008.5.1.4.1.1.1.2	Transfer Syntaxes for Image Storage Services		SCP	None
Digital Mammography X-Ray Image Storage - For Processing	1.2.840.10008.5.1.4.1.1.1.2.1	Transfer Syntaxes for Image Storage Services		SCP	None
Digital Intra-oral X-Ray Image Storage - For Presentation	1.2.840.10008.5.1.4.1.1.1.3	Transfer Syntaxes for Image Storage Services		SCP	None
Digital Intra-oral X-Ray Image Storage - For Processing	1.2.840.10008.5.1.4.1.1.1.3.1	Transfer Syntaxes for Image Storage Services		SCP	None
CT Image Storage	1.2.840.10008.5.1.4.1.1.2	Transfer Syntaxes for Image Storage Services		SCP	None
Ultrasound Multi-frame Image Storage	1.2.840.10008.5.1.4.1.1.3.1	Transfer Syntaxes for Image Storage Services		SCP	None
MR Image Storage	1.2.840.10008.5.1.4.1.1.4	Transfer Syntaxes for Image Storage Services		SCP	None
Enhanced MR Image Storage	1.2.840.10008.5.1.4.1.1.4.1	Transfer Syntaxes for Image Storage Services		SCP	None
Ultrasound Image Storage	1.2.840.10008.5.1.4.1.1.6.1	Transfer Syntaxes for Image Storage Services		SCP	None
Secondary Capture Image Storage	1.2.840.10008.5.1.4.1.1.7	Transfer Syntaxes for Image Storage Services		SCP	None
X-Ray Angiographic Image Storage	1.2.840.10008.5.1.4.1.1.12.1	Transfer Syntaxes for Image Storage Services		SCP	None
X-Ray Radiofluoroscopic Image Storage	1.2.840.10008.5.1.4.1.1.12.2	Transfer Syntaxes for Image Storage Services		SCP	None
Nuclear Medicine Image Storage	1.2.840.10008.5.1.4.1.1.20	Transfer Syntaxes for Image Storage Services		SCP	None
Raw Data Storage	1.2.840.10008.5.1.4.1.1.66	Transfer Syntaxes for Image Storage Services		SCP	None
VL Endoscopic Image Storage	1.2.840.10008.5.1.4.1.1.77.1.1	Transfer Syntaxes for Image Storage Services		SCP	None
VL Microscopic Image Storage	1.2.840.10008.5.1.4.1.1.77.1.2	Transfer Syntaxes for Image Storage Services		SCP	None
VL Slide-Coordinates Microscopic Image Storage	1.2.840.10008.5.1.4.1.1.77.1.3	Transfer Syntaxes for Image Storage Services		SCP	None
VL Photographic Image Storage	1.2.840.10008.5.1.4.1.1.77.1.4	Transfer Syntaxes for Image Storage Services		SCP	None
Positron Emission Tomography Image Storage	1.2.840.10008.5.1.4.1.1.128	Transfer Syntaxes for Image Storage Services		SCP	None
RT Image Storage	1.2.840.10008.5.1.4.1.1.481.1	Transfer Syntaxes for Image Storage Services		SCP	None
Grayscale Softcopy Presentation State Storage SOP Class	1.2.840.10008.5.1.4.1.1.11.1	Transfer Syntaxes for Image Storage Services		SCP	None
Basic Text SR	1.2.840.10008.5.1.4.1.1.88.11	Transfer Syntaxes for Image Storage Services		SCP	None
Enhanced SR	1.2.840.10008.5.1.4.1.1.88.22	Transfer Syntaxes for Image Storage Services		SCP	None
Comprehensive SR	1.2.840.10008.5.1.4.1.1.88.33	Transfer Syntaxes for Image Storage Services		SCP	None
Key Object Selection Document	1.2.840.10008.5.1.4.1.1.88.59	Transfer Syntaxes for Image Storage Services		SCP	None

Any other configured SOPs can be configured as either Image Storage service or Non-Image Storage Service

**Table 1.10. Accepted Transfer Syntaxes for Non-Image Storage Services**

Name	UID
Implicit VR Little Endian	1.2.840.10008.1.2
Explicit VR Little Endian	1.2.840.10008.1.2.1

**Table 1.11. Accepted Transfer Syntaxes for Image Storage Services**

Name	UID
Implicit VR Little Endian	1.2.840.10008.1.2
Explicit VR Little Endian	1.2.840.10008.1.2.1
JPEG Baseline	1.2.840.10008.1.2.4.50
JPEG Extended	1.2.840.10008.1.2.4.51
JPEG Lossless, Non-Hierarchical	1.2.840.10008.1.2.4.57
JPEG Lossless, Non-Hierarchical, First-Order Prediction	1.2.840.10008.1.2.4.70
JPEG-LS Lossless Image Compression	1.2.840.10008.1.2.4.80
JPEG-LS Lossy (Near-Lossless) Image	1.2.840.10008.1.2.4.81
JPEG 2000 Image Compression (Lossless Only)	1.2.840.10008.1.2.4.90
JPEG 2000 Image Compression	1.2.840.10008.1.2.4.91
RLE Lossless	1.2.840.10008.1.2.5

If the Called AET is not corresponding to the actual Storage Server AET, it only will be accepted the Presentation Context for the Verification SOP Class.

### 1.3.2.1.4.1.3. SOP Specific Conformance

#### 1.3.2.1.4.1.3.1. Specific Conformance for Verification SOP Class

VidiStar DICOM Service/archive Storage Server provides standard conformance to the DICOM Verification Service Class as a SCP. The status code for the C-ECHO is described in the following table:

**Table 1.12. C-Echo Response Status Handling Behavior**

Service Status	Further Meaning	Error Code	Behavior
Success	Success	"0000"	The C-ECHO request is accepted

#### **1.3.2.1.4.1.3.2. Specific Conformance for Storage SOP Classes**

The associated Activity with the Storage service is the storage of medical DICOM data received over the network on a designated storage repository. The VidiStar DICOM Service Storage Server AE will return a failure status if it is un-able to store the received instance(s).

The VidiStar DICOM Service/archive Storage Server AE does not have any dependencies on the number of Associations used to send images to it. Images belonging to more than one Study or Series can be sent over a single or multiple Associations. Images belonging to a single Study or Series can also be sent over different Associations. There is no limit on either the number of SOP Instances or the maximum amount of total SOP Instance data that can be transferred over a single Association.



The VidiStar DICOM Service/archive Storage Server AE is configured to retain the original DICOM data in DICOM Part 10 compliant file format. The VidiStar DICOM Service/archive Storage Server AE is Level 2 (Full) conformant as a Storage SCP. In addition, all Private and SOP Class Extended Elements are maintained in the DICOM format files. In addition to saving all Elements in files, a subset of the Elements are stored in the VidiStar DICOM Service/archive Query/Retrieve Server database to support query and retrieval requests and also allow updating of Patient, Study, and Series information by user input, or demographic and Study related messages. If the received instance is a duplicate of a previously received instance, the old file and database information will not be overwritten with the new one.

The average throughput performance has been determined to be between 9 and 10 Mega Bytes per second on a 100 Megabit Ethernet network. Actual performance will depend greatly on the performance of the CSTORE SCU, the number of simultaneous active Associations, and the underlying network performance.

### 1.3.2.1.4.1.3.2.1. Storage Server AE C-STORE Response

**Table 1.13. VidiStar DICOM Service Storage Server C-STORE Response Status**

Service Status	Further Meaning	Error Code	Behavior
Success	Success	"0000"	The Composite SOP Instance was successfully received, verified, and stored in the system repository.
Error	Processing Failure	"0110"	This status is returned due to internal errors such as a processing failure response from the internal database or a filesystem operation. The appropriate Status will be sent in the C-STORE Response. Error indication message is output to the Service Log.
Warning	Coercion of Data Elements	"B000"	This status is returned if one or more Attribute values were coerced/modified on reception. Image transmission is considered successful. The appropriate SUCCESS Status will be sent in the C-STORE Response. Warning indication message is output to the Service Log.
Warning	Data Set does not match SOP class	"B007"	This status is returned if the C-STORE Request specifies Attributes that are not specific as part of the Storage SOP class. Image transmission is considered successful. The appropriate SUCCESS Status will be sent in the C-STORE Response. Warning indication message is output to the Service Log.

### 1.3.2.1.4.1.3.2.2. Storage Server AE Storage Service Communication Failure Reasons

**Table 1.14. VidiStar DICOM Service Storage Server Service Communication Failure Reasons**

Exception	Reason
Timeout expiry for an expected DICOM Message Request (DIMSE level timeout). I.e. The STORAGESCP AE is waiting for the next C-STORE Request on an open Association but the timer expires.	The Association is aborted by issuing a DICOM AABORT. Error message is output to the Service Log. If some Composite SOP Instances have already been successfully received then they are maintained in the database. They are not automatically discarded because of a later failure.

Timeout expiry for an expected DICOM PDU or TCP/IP packet (Low-level timeout). I.e. The STORAGE-SCP AE is waiting for the next C-STORE Data Set PDU but the timer expires.

The Association is aborted by issuing a DICOM AABORT. Error message is output to the Service Log. If a C-STORE Data Set has not been fully received then the data already received is discarded. If some Composite SOP Instances have already been successfully received over the Association then they are maintained in the database.

Association aborted by the SCU or the network layers indicate communication loss (i.e. low-level TCP/IP socket closure)

Error message is output to the Service Log. If some Composite SOP Instances have already been successfully received then they are maintained in the database. They are not automatically discarded because of a later failure.

### **1.3.2.1.4.1.3.2.3. Specific Conformance for Storage Commitment SOP Class**

The associated Activity with the Storage Commitment Push Model service is the communication by the VidiStar DICOM Service Storage Server AE to peer AEs that it has committed to permanently store Composite SOP Instances that have been sent to it. It thus allows peer AEs to determine whether the VidiStar DICOM Service Query/Retrieve Server has taken responsibility for the archiving of specific SOP Instances so that they can be flushed from the peer AE system.

The VidiStar DICOM Service Storage Server AE takes the list of Composite SOP Instance UIDs specified in a Storage Commitment Push Model N-ACTION Request and checks if they are present in the VidiStar DICOM Service query/retrieve Server repository. As long as the Composite SOP Instance UIDs are present in the database, the VidiStar DICOM Service Storage Server AE will consider those Composite SOP Instance UIDs to be successfully archived. The VidiStar DICOM Service Storage Server AE does not require the Composite SOP Instances to actually be successfully written to archive media in order to commit to responsibility for maintaining these SOP Instances.

Once the VidiStar DICOM Service Storage Server AE has checked for the existence of the specified Composite SOP Instances, it will then attempt to send the Notification request (N-EVENT-REPORT-RQ). The VidiStar DICOM Service Storage Server AE will request a new Association with the peer AE that made the original N-ACTION Request.

The VidiStar DICOM Service Storage Server AE will not cache Storage Commitment Push Model N-ACTION Requests that specify Composite SOP Instances that have not yet been transferred to the VidiStar DICOM Service Query/Retrieve Server. If a peer AE sends a Storage Commitment Push Model N-ACTION Request before the specified Composite SOP Instances are later sent over the same Association, the VidiStar DICOM Service Storage Server AE will not commit to responsibility for such SOP Instances.

The VidiStar DICOM Service Storage Server AE does not support the optional Storage Media File-Set ID & UID attributes in the N-ACTION.

The VidiStar DICOM Service Storage Server AE will support Storage Commitment Push Model requests for SOP Instances of any of the Storage SOP Classes that are also supported by the VidiStar DICOM Service Storage Server AE:

**Table 1.15. Supported Referenced SOP Classes in Storage Commitment Push Model N-ACTION Requests**

<b>Supported Referenced SOP Classes</b>
Hardcopy Grayscale Image Storage SOP Class
Hardcopy Color Image Storage SOP Class
Computed Radiography Image Storage
Digital X-Ray Image Storage - For Presentation
Digital X-Ray Image Storage - For Processing
Digital Mammography X-Ray Image Storage - For Presentation
Digital Mammography X-Ray Image Storage - For Processing
Digital Intra-oral X-Ray Image Storage - For Presentation
Digital Intra-oral X-Ray Image Storage - For Processing
CT Image Storage
Ultrasound Multi-frame Image Storage
MR Image Storage
Enhanced MR Image Storage
Ultrasound Image Storage
Secondary Capture Image Storage
X-Ray Angiographic Image Storage
X-Ray Radiofluoroscopic Image Storage
Nuclear Medicine Image Storage
VL Endoscopic Image Storage
VL Microscopic Image Storage
VL Slide-Coordinates Microscopic Image Storage
VL Photographic Image Storage
Positron Emission Tomography Image Storage
RT Image Storage
Grayscale Softcopy Presentation State Storage SOP Class
Basic Text SR
Enhanced SR
Comprehensive SR
Key Object Selection Document

The VidiStar DICOM Service/archive Storage Server AE will return the following Status Code values in N-ACTION Responses:

**Table 1.16. VidiStar DICOM Service/archive Storage Server N-ACTION Response Status**

<b>Service Status</b>	<b>Further Meaning</b>	<b>Error Code</b>	<b>Behavior</b>
Success	Success	"0000"	The SCP has successfully received the Storage Commitment Push Model N-ACTION Request and can process the commitment request for the indicated SOP Instances.
Error	Processing Failure	"0110"	Indicates that the Storage Commitment Push Model N-ACTION Request cannot be parsed or fully processed due to a database or system failure.
Error	Missing Attribute	"0120"	Indicates that the Storage Commitment Push Model N-ACTION Request cannot be processed because a required attribute is missing from the N-ACTION Request Data Set.

Error	Missing Attribute	"0121"	Indicates that the Storage Commitment Push Model N-ACTION Request cannot be processed because a Type 1 attribute in the N-ACTION Request Data Set does not specify a value.
-------	-------------------	--------	---

The VidiStar DICOM Service Storage Server AE will exhibit the following Behavior according to the Status Code value re-turned in an N-EVENT-REPORT Response from a destination Storage Commitment Push Model SCU:

**Table 1.17. VidiStar DICOM Service/archive Storage Server N-EVENT Report Response Status Handling Behaviour**

Service Status	Further Meaning	Error Code	Behavior
Success	Success	"0000"	The SCU has successfully received the Storage Commitment Push Model N-EVENT-REPORT Request. Success indication message is output to the Service Logs.
Warning	Attribute List Error	"0107"	Transmission of Storage Commitment Push Model N-EVENTREPORT Request is considered successful. Warning indication message is output to the Service Logs.
*	*	Any Other Code	This is treated as a permanent Failure. Error indication message is output to the Service Logs.

The next table report the VidiStar DICOM Service Storage Server behaviour in case of communication failure:

**Table 1.18. VidiStar DICOM Service/archive Storage Server AE Storage Commitment Push Model Communication Failure Behaviour**

Exception	Behavior
-----------	----------

Timeout expiry for an expected DICOM Message Request (DIMSE level timeout). I.e. The STORAGE SCP AE is waiting for the next N-ACTION Request on an open Association but the timer expires.

The Association is aborted by issuing a DICOM AABORT. If some Composite SOP Instances have been successfully received over the same Association via the Storage Service then they are maintained in the database. They are not automatically discarded because of a later Storage Commitment messaging failure. Any previously received Storage Commitment Push Model N-ACTION Requests will still be fully processed. Error indication message is output to the Service Logs. No message is posted to the User Interface.

Exception	Behavior
-----------	----------

Timeout expiry for an expected DICOM PDU or TCP/IP packet (Low-level timeout).

The Association is aborted by issuing a DICOM AABORT. If some Composite SOP Instances have been successfully received over the same Association via the Storage Service then they are maintained in the database. They are not automatically discarded because of a later Storage Commitment messaging failure. Any previously received Storage Commitment Push Model NACTION Requests will still be fully processed. Error indication message is output to the Service Logs. No message is posted to the User Interface.

Association A-ABORTed by the SCU or the network layers indicate communication loss (i.e. low-level TCP/IP socket closure).

The TCP/IP socket is closed. If some Composite SOP Instances have been successfully received over the same Association via the Storage Service then they are maintained in the database. They are not automatically discarded because of a later Storage Commitment messaging failure. Any previously received Storage Commitment Push Model NACTION Requests will still be fully processed. Error indication message is output to the Service Logs. No message is posted to the User Interface.

### 1.3.2.2. VidiStar DICOM Service/archive Query/Retrieve Server Application Entity Specification

#### 1.3.2.2.1. SOP Classes

VidiStar DICOM Service/archive Query/Retrieve Server Application Entity provides Standard Conformance to the following SOP Classes:

**Table 1.19. SOP Classes for VidiStar DICOM Service/archive Query/Retrieve Server AE**

SOP Class Name	SOP Class UID	SCU	SCP
Verification SOP Class	1.2.840.10008.1.1	Yes	No
Storage Commitment Push Model SOP Class	1.2.840.10008.1.20.1	Yes	No
Hardcopy Grayscale Image Storage SOP Class	1.2.840.10008.5.1.1.29	Yes	No
Hardcopy Color Image Storage SOP Class	1.2.840.10008.5.1.1.30	Yes	No
Computed Radiography Image Storage	1.2.840.10008.5.1.4.1.1.1	Yes	No
Digital X-Ray Image Storage - For Presentation	1.2.840.10008.5.1.4.1.1.1.1	Yes	No
Digital X-Ray Image Storage - For Processing	1.2.840.10008.5.1.4.1.1.1.1.1	Yes	No
Digital Mammography X-Ray Image Storage - For Presentation	1.2.840.10008.5.1.4.1.1.1.2	Yes	No
Digital Mammography X-Ray Image Storage - For Processing	1.2.840.10008.5.1.4.1.1.1.2.1	Yes	No
Digital Intra-oral X-Ray Image Storage - For Presentation	1.2.840.10008.5.1.4.1.1.1.3	Yes	No
Digital Intra-oral X-Ray Image Storage - For Processing	1.2.840.10008.5.1.4.1.1.1.3.1	Yes	No
CT Image Storage	1.2.840.10008.5.1.4.1.1.2	Yes	No
US Multi-frame Image (retired)	1.2.840.10008.5.1.4.1.1.3		No
Ultrasound Multi-frame Image Storage	1.2.840.10008.5.1.4.1.1.3.1	Yes	No

MR Image Storage	1.2.840.10008.5.1.4.1.1.4	Yes	No
Enhanced MR Image Storage	1.2.840.10008.5.1.4.1.1.4.1	Yes	No
NM Image (retired)	1.2.840.10008.5.1.4.1.1.5	Yes	No
US Image (retired)	1.2.840.10008.5.1.4.1.1.6	Yes	No
Ultrasound Image Storage	1.2.840.10008.5.1.4.1.1.6.1	Yes	No
Secondary Capture Image Storage	1.2.840.10008.5.1.4.1.1.7	Yes	No
Multi-frame Single Bit Secondary Capture Image Storage SOP Class	1.2.840.10008.5.1.4.1.1.7.1		No
Multi-frame Grayscale Byte Secondary Capture Image Storage	1.2.840.10008.5.1.4.1.1.7.2	Yes	No
Multi-frame Grayscale Word Secondary Capture Image Storage	1.2.840.10008.5.1.4.1.1.7.3	Yes	No
Multi-frame Color Secondary Capture Image Storage	1.2.840.10008.5.1.4.1.1.7.4	Yes	No
Stand Alone Overlay Storage	1.2.840.10008.5.1.4.1.1.8	Yes	No
Stand Alone Curve	1.2.840.10008.5.1.4.1.1.9	Yes	No
Standalone Modality LUT Storage (Retired)	1.2.840.10008.5.1.4.1.1.10	Yes	No
Standalone VOI LUT Storage SOP Class (Retired)	1.2.840.10008.5.1.4.1.1.11	Yes	No
X-Ray Angiographic Image Storage	1.2.840.10008.5.1.4.1.1.12.1	Yes	No
X-Ray Radiofluoroscopic Image Storage	1.2.840.10008.5.1.4.1.1.12.2	Yes	No
Nuclear Medicine Image Storage	1.2.840.10008.5.1.4.1.1.20	Yes	No
Raw Data Storage	1.2.840.10008.5.1.4.1.1.66	Yes	No
VL Endoscopic Image Storage	1.2.840.10008.5.1.4.1.1.77.1.1	Yes	No
VL Microscopic Image Storage	1.2.840.10008.5.1.4.1.1.77.1.2	Yes	No
VL Slide-Coordinates Microscopic Image Storage	1.2.840.10008.5.1.4.1.1.77.1.3	Yes	No
VL Photographic Image Storage	1.2.840.10008.5.1.4.1.1.77.1.4	Yes	No
Positron Emission Tomography Image Storage	1.2.840.10008.5.1.4.1.1.128	Yes	No
RT Image Storage	1.2.840.10008.5.1.4.1.1.481.1	Yes	No
RT Dose Storage SOP Class	1.2.840.10008.5.1.4.1.1.481.2	Yes	No
RT Structure Set Storage SOP Class	1.2.840.10008.5.1.4.1.1.481.3	Yes	No
RT Plan Storage SOP Class	1.2.840.10008.5.1.4.1.1.481.5	Yes	No
General ECG Waveform Storage SOP Class	1.2.840.10008.5.1.4.1.1.9.1.2	Yes	No
Grayscale Softcopy Presentation State Storage SOP Class	1.2.840.10008.5.1.4.1.1.11.1	Yes	No
X-ray Angio-graphic Biplane Image	1.2.840.10008.5.1.4.1.1.12.3	Yes	No
Detail SR Storage - Trial (Retired)	1.2.840.10008.5.1.4.1.1.88.3	Yes	No
Basic Text SR	1.2.840.10008.5.1.4.1.1.88.11	Yes	No
Enhanced SR	1.2.840.10008.5.1.4.1.1.88.22	Yes	No
Comprehensive SR	1.2.840.10008.5.1.4.1.1.88.33	Yes	No
Key Object Selection Document	1.2.840.10008.5.1.4.1.1.88.59	Yes	No
Encapsulated PDF Storage	1.2.840.10008.5.1.4.1.1.104.1	Yes	No
Color Softcopy Presentation State Storage	1.2.840.10008.5.1.4.1.1.11.2	Yes	No
Hardcopy Grayscale Image Storage (Retired)	1.2.840.10008.5.1.1.29	Yes	No
Hardcopy Color Image Storage (Retired)	1.2.840.10008.5.1.1.30	Yes	No
Computed Radiography Image Storage	1.2.840.10008.5.1.4.1.1.1	Yes	No

Storage of private SOP classes can also be configured for Query/Retrieve Server Application Entity

**Table 1.2a. Private SOP Classes for VidiStar DICOM Service/archive Query/Retrieve Server AE**

SOP Class Name	SOP Class UID	SCU	SCP
Philips Private X-Ray Image Storage	1.3.46.670589.2.3.1.1	No	Yes

Philips Private Reconstructed X-ray Storage	1.3.46.670589.2.4.1.1	No	Yes
Philips Private iE33 3D NEO Presentation State Subpage Storage	1.3.46.670589.2.5.1.1	No	Yes
Philips Private ViewForum 3D Volume New Storage	1.3.46.670589.5.0.1.1	No	Yes
Philips Private ViewForum MR Synthetic Image Storage	1.3.46.670589.5.0.10	No	Yes
Philips Private ViewForum MR Cardio Analysis New Storage	1.3.46.670589.5.0.11.1	No	Yes
Philips Private ViewForum CX Synthetic Image Storage	1.3.46.670589.5.0.12	No	Yes
Philips Private ViewForum Perfusion Storage	1.3.46.670589.5.0.13	No	Yes
Philips Private ViewForum Perfusion Analysis Storage	1.3.46.670589.5.0.14	No	Yes
Philips Private ViewForum 3D Volume Object New Storage	1.3.46.670589.5.0.2.1	No	Yes
Philips Private ViewForum Surface New Storage	1.3.46.670589.5.0.3.1	No	Yes
Philips Private ViewForum MR Cardio New Storage	1.3.46.670589.5.0.8.1	No	Yes
Philips Private ViewForum CT Synthetic Image Storage	1.3.46.670589.5.0.9	No	Yes

## 1.3.2.2.2. Association Establishment Policy

### 1.3.2.2.2.1. General

The VidiStar DICOM Service/archive Query/Retrieve Server AE can both accept and propose Association Requests. The Query/Retrieve Server AE will accept Association Requests for the Verification and Query/Retrieve Services. It will propose Associations for Verification and Storage Services.

The DICOM standard application context name for DICOM 3.0 is always accepted and proposed:

**Table 1.20. DICOM application context name for VidiStar DICOM Service Query/Retrieve Server AE**

Application Context Name	1.2.840.10008.3.1.1.1
--------------------------	-----------------------

### 1.3.2.2.2.2. Number of Associations

VidiStar DICOM Service/archive Query/Retrieve Server can support multiple simultaneous Associations requested by peer AEs. Default is 10. This value can be configured through the attribute "MaxClients" in the Application Server configuration file (i.e. jboss-service.xml for JBoss application server).

**Table 1.21. Number of Associations accepted for VidiStar DICOM Service Query/Retrieve Server AE**

Maximum number of simultaneous Associations	10 (Configurable)
---	-------------------

### 1.3.2.2.2.3. Asynchronous Nature

VidiStar DICOM Service/archive Query/Retrieve Server does not support asynchronous communication. Multiple outstanding transactions are not supported. It allows up to one invoked and one performed operation on an Association (it is synchronous). Asynchronous mode of operation is not supported.

**Table 1.22. Asynchronous Nature as SCP for VidiStar DICOM Service Query/Retrieve Server AE**

Maximum number of outstanding asynchronous transactions	1 (Not Configurable)
---	----------------------

### 1.3.2.2.2.4. Implementation Identifying Information

The implementation information for this Application Entity is:

**Table 1.23. DICOM Implementation Class and Version for VidiStar DICOM Service Query/Retrieve Server AE**

Implementation Class UID	1.2.40.0.13.1.1
Implementation Version Name	VidiStar DICOM Service-1.1

## 1.3.2.2.3. Association Initiation Policy

### 1.3.2.2.3.1. Activity - Send Images Requested by an External Peer AE

#### 1.3.2.2.3.1.1. Description and Sequencing of Activities



The VidiStar DICOM Service/archive Query/Retrieve Server AE will initiate a new Association when a valid C-MOVE Re-quest has been performed by an external Peer. The Query/Retrieve Server AE will send the Association Re-quest to the specific C-MOVE destination, and upon successful negotiation of the required Presentation Con-text the image transfer is started. In all cases an attempt will be made to transmit all the indicated images in a single Association but this may not always be possible. The Association will be released when all the images have been sent. If an error occurs during transmission over an open Association then the image transfer is halted. The Query/ Retrieve Server AE will not attempt to independently retry the image export.

### 1.3.2.2.3.1.1.1. Proposed Presentation Contexts

VidiStar DICOM Service/archive Query/Retrieve Server will propose Presentation Contexts as shown in the following table:

<b>Table 1.24. Proposed Presentation Contexts by the VidiStar DICOM Service/archive Query/Retrieve Server AEAbstract Syntax</b>		<b>Transfer Syntax</b>		<b>Role</b>	<b>Ext. Role</b>
<b>Name</b>	<b>UID</b>	<b>Name List</b>	<b>UID List</b>		
Hardcopy Grayscale Image Storage SOP Class	1.2.840.10008.5.1.1.29	Transfer Syntaxes for Image Storage Services		SCU	None
Hardcopy Color Image Storage SOP Class	1.2.840.10008.5.1.1.30	Transfer Syntaxes for Image Storage Services		SCU	None
Computed Radiography Image Storage	1.2.840.10008.5.1.4.1.1.1	Transfer Syntaxes for Image Storage Services		SCU	None
Digital X-Ray Image Storage - For Presentation	1.2.840.10008.5.1.4.1.1.1.1	Transfer Syntaxes for Image Storage Services		SCU	None
Digital X-Ray Image Storage - For Processing	1.2.840.10008.5.1.4.1.1.1.1.1	Transfer Syntaxes for Image Storage Services		SCU	None
Digital Mammography X-Ray Image Storage - For Presentation	1.2.840.10008.5.1.4.1.1.1.2	Transfer Syntaxes for Image Storage Services		SCU	None
Digital Mammography X-Ray Image Storage - For Processing	1.2.840.10008.5.1.4.1.1.1.2.1	Transfer Syntaxes for Image Storage Services		SCU	None
Digital Intra-oral X-Ray Image Storage - For Presentation	1.2.840.10008.5.1.4.1.1.1.3	Transfer Syntaxes for Image Storage Services		SCU	None
Digital Intra-oral X-Ray Image Storage - For Processing	1.2.840.10008.5.1.4.1.1.1.3.1	Transfer Syntaxes for Image Storage Services		SCU	None
CT Image Storage	1.2.840.10008.5.1.4.1.1.2	Transfer Syntaxes for Image Storage Services		SCU	None
Ultrasound Multi-frame Image Storage	1.2.840.10008.5.1.4.1.1.3.1	Transfer Syntaxes for Image Storage Services		SCU	None
MR Image Storage	1.2.840.10008.5.1.4.1.1.4	Transfer Syntaxes for Image Storage Services		SCU	None
Enhanced MR Image Storage	1.2.840.10008.5.1.4.1.1.4.1	Transfer Syntaxes for Image Storage Services		SCU	None
Ultrasound Image Storage	1.2.840.10008.5.1.4.1.1.6.1	Transfer Syntaxes for Image Storage Services		SCU	None
Secondary Capture Image Storage	1.2.840.10008.5.1.4.1.1.7	Transfer Syntaxes for Image Storage Services		SCU	None
X-Ray Angiographic Image Storage	1.2.840.10008.5.1.4.1.1.12.1	Transfer Syntaxes for Image Storage Services		SCU	None
X-Ray Radiofluoroscopic Image Storage	1.2.840.10008.5.1.4.1.1.12.2	Transfer Syntaxes for Image Storage Services		SCU	None
Nuclear Medicine Image Storage	1.2.840.10008.5.1.4.1.1.20	Transfer Syntaxes for Image Storage Services		SCU	None
VL Endoscopic Image Storage	1.2.840.10008.5.1.4.1.1.77.1.1	Transfer Syntaxes for Image Storage Services		SCU	None

VL Microscopic Image Storage	1.2.840.10008.5.1.4.1.1.77.1.2	Transfer Syntaxes for Image Storage Services	SCU	None
VL Slide-Coordinates Microscopic Image Storage	1.2.840.10008.5.1.4.1.1.77.1.3	Transfer Syntaxes for Image Storage Services	SCU	None
VL Photographic Image Storage	1.2.840.10008.5.1.4.1.1.77.1.4	Transfer Syntaxes for Image Storage Services	SCU	None
Positron Emission Tomography Image Storage	1.2.840.10008.5.1.4.1.1.128	Transfer Syntaxes for Image Storage Services	SCU	None
RT Image Storage	1.2.840.10008.5.1.4.1.1.481.1	Transfer Syntaxes for Image Storage Services	SCU	None
Grayscale Softcopy Presentation State Storage SOP Class	1.2.840.10008.5.1.4.1.1.11.1	Transfer Syntaxes for Non-Image Storage Services	SCU	None
Basic Text SR	1.2.840.10008.5.1.4.1.1.88.11	Transfer Syntaxes for Non-Image Storage Services	SCU	None
Enhanced SR	1.2.840.10008.5.1.4.1.1.88.22	Transfer Syntaxes for Non-Image Storage Services	SCU	None
Comprehensive SR	1.2.840.10008.5.1.4.1.1.88.33	Transfer Syntaxes for Non-Image Storage Services	SCU	None
Key Object Selection Document	1.2.840.10008.5.1.4.1.1.88.59	Transfer Syntaxes for Non-Image Storage Services	SCU	None

Any other configured SOPs can be configured as either Image Storage service or Non-Image Storage Service

**Table 1.25. Proposed Transfer Syntaxes for Non-Image Storage Services**

Name	UID
Implicit VR Little Endian	1.2.840.10008.1.2
Explicit VR Little Endian	1.2.840.10008.1.2.1

**Table 1.26. Proposed Transfer Syntaxes for Image Storage Services**

Name	UID
Implicit VR Little Endian	1.2.840.10008.1.2
Explicit VR Little Endian	1.2.840.10008.1.2.1
JPEG Baseline	1.2.840.10008.1.2.4.50
JPEG Extended	1.2.840.10008.1.2.4.51
JPEG Lossless, Non-Hierarchical	1.2.840.10008.1.2.4.57
JPEG Lossless, Non-Hierarchical, First-Order Prediction	1.2.840.10008.1.2.4.70
JPEG-LS Lossless Image Compression	1.2.840.10008.1.2.4.80
JPEG-LS Lossy (Near-Lossless) Image	1.2.840.10008.1.2.4.81
JPEG 2000 Image Compression (Lossless Only)	1.2.840.10008.1.2.4.90
JPEG 2000 Image Compression	1.2.840.10008.1.2.4.91
RLE Lossless	1.2.840.10008.1.2.5

### 1.3.2.2.3.1.1.1.1. SOP Specific Conformance

#### 1.3.2.2.3.1.1.1.1.1. Specific Conformance for Image, SR, KIN and SPS SOP Classes

When a SOP Instance is selected for export from VidiStar DICOM Service/archive Query/Retrieve Server, its contents will be exported as it was originally received unless some of the Patient demographic and Study information Elements were altered.

The Patient demographic and Study information can be entered or altered by several means: manually (through the web interface), or from HL7 messaging. The replacement behavior depends on which specific DICOM and HL7 services are supported. Also, this behavior is configurable. Values can be altered without changing the SOP Instance UID unless otherwise noted.

The Query/Retrieve Server AE will exhibit the following behavior according to the Status Code value returned in a C-STORE Response from a destination C-STORE SCP:

**Table 1.27. VidiStar DICOM Service/archive Query/Retrieve Server AE C-STORE Response Status Handling Behavior**

<b>Service Status</b>	<b>Further Meaning</b>	<b>Error Code</b>	<b>Behavior</b>
Success	Success	"0000"	The remote Storage SCP has successfully stored the exported SOPInstance. The appropriate PENDING or SUCCESS Status will be sent in the C-MOVE Response. Success indication message is output to the Service Log.
Refused	Out of Resources	"A700-A7FF"	This is treated as a permanent Failure. The appropriate Status will be sent in the C-MOVE Response. Error indication message is output to the Service Log.
Error	Cannot Understand	"C000-CFFF"	This is treated as a permanent Failure. The appropriate Status will be sent in the C-MOVE Response. Error indication message is output to the Service Log.
Warning	Coercion of Data Elements	"B000"	Image transmission is considered successful. The appropriate PENDING or SUCCESS Status will be sent in the C-MOVE Response. Success indication message is output to the Service Log.
Warning	Data Set does not match SOP class	"B007"	Image transmission is considered successful. The appropriate PENDING or SUCCESS Status will be sent in the C-MOVE Response. Success indication message is output to the Service Log.

<b>Service Status</b>	<b>Further Meaning</b>	<b>Error Code</b>	<b>Behavior</b>
Warning	Elements Discarded	"B006"	Image transmission is considered successful. The appropriate PENDING or SUCCESS Status will be sent in the C-MOVE Response. Success indication message is output to the Service Log.
Warning	Attribute List Error	"0107"	Image transmission is considered successful. The appropriate PENDING or SUCCESS Status will be sent in the C-MOVE Response. Success indication message is output to the Service Log.
Warning	Attribute Value Out of Range	"0116"	Image transmission is considered successful. The appropriate PENDING or SUCCESS Status will be sent in the C-MOVE Response. Success indication message is output to the Service Log.
*	*	Any other status code	This is treated as a permanent Failure. The appropriate Status will be sent in the C-MOVE Response. Error indication message is output to the Service Log.

**Table 1.28. VidiStar DICOM Service/archive Query/Retrieve Server AE Communication Failure Behavior**

Exception	Behavior
Timeout expiry for an expected DICOM Message Request (DIMSE level timeout).	The Association is aborted by issuing a DICOM AABORT. The appropriate Status will be sent in the CMOVE Response. Error indication message is output to the Service Logs
Timeout expiry for an expected DICOM PDU or TCP/IP packet (Low-level timeout).	The Association is aborted by issuing a DICOM AABORT. The appropriate Status will be sent in the CMOVE Response. Error indication message is output to the Service Logs
Association A-ABORTed by the SCU or the network layers indicate communication loss (i.e. low-level TCP/IP socket closure).	The TCP/IP Socket is closed. Error indication message is output to the Service Logs.

### 1.3.2.2.4. Association Acceptance Policy

#### 1.3.2.2.4.1. Activity - Handling Query and Retrieval Requests

##### 1.3.2.2.4.1.1. Description and Sequencing of Activities

The Query/Retrieve Server AE accepts Associations only if they have valid Presentation Contexts. If none of the requested Presentation Contexts are accepted then the Association Request itself is rejected. It can be configured to only accept Associations from certain Application Entities. If Query/Retrieve Server AE receives a query (C-FIND) request then the response(s) will be sent over the same Association used to send the C-FIND-Request. If Query/Retrieve Server AE receives a retrieval (C-MOVE) request then the responses will be sent over the same Association used to send the C-MOVE-Request.

The Query/Retrieve Server AE will send the requested SOP Instances to the C-MOVE Destination over a newly created Association and report in the C-MOVE-Response any success or failure status of each attempt to send a Composite SOP Instance. When an association has been established the Sequencing of Real-World Activities is as described in Section 1.3.1.3, “Sequencing of Real-World Activities”. The Query/Retrieve Server AE may reject Association attempts as shown in the table below. The Result, Source and Reason / Diag columns represent the values returned in the corresponding fields of an ASSOCIATE-RJ PDU (see PS 3.8, Section 9.3.4).

**Table 1.29. Association Rejection Reasons**

Result	Source	Reason	Description
2 - rejected transient	provider	2 - local limit exceeded	The (configurable) maximum number of simultaneous associations has been reached. An association request with the same parameters may succeed at a later time.
1 - rejected permanent	user	2 - application context name not supported	The Association request contained an unsupported Application Context Name. An association request with the same parameters will NOT succeed at a later time.

1 - rejected permanent user      3 – calling AE title not recognized      The Association request contained an unrecognized Calling AE Title. An association request with the same parameters will NOT succeed at a later time unless configuration changes are made.

### 1.3.2.2.4.1.2. Accepted Presentation Contexts

**Table 1.30. Accepted Presentation Contexts for VidiStar DICOM Service/archive Query/Retrieve Server AE**

Abstract Syntax		Transfer Syntax		Role	Ext. Role
Name	UID	Name List	UID List		
Verification SOP Class	1.2.840.10008.1.1	Implicit VR Little Endian	1.2.840.10008.1.2	SCP	None
Patient Root Q/R Information Model – FIND	1.2.840.10008.5.1.4.1.2.1.1	Implicit VR Little Endian Explicit VR Little Endian	1.2.840.10008.1.2 1.2.840.10008.1.2.1	SCP	Relational queires
Patient Root Q/R Information Model – MOVE	1.2.840.10008.5.1.4.1.2.1.2	Implicit VR Little Endian Explicit VR Little Endian	1.2.840.10008.1.2 1.2.840.10008.1.2.1	SCP	Relational retrieve
Study Root Q/R Information Model – FIND	1.2.840.10008.5.1.4.1.2.2.1	Implicit VR Little Endian Explicit VR Little Endian	1.2.840.10008.1.2 1.2.840.10008.1.2.1	SCP	Relational queires
Study Root Q/R Information Model – MOVE	1.2.840.10008.5.1.4.1.2.2.2	Implicit VR Little Endian Explicit VR Little Endian	1.2.840.10008.1.2 1.2.840.10008.1.2.1	SCP	Relational retrieve
Patient/Study Only Q/R Information Model – FIND	1.2.840.10008.5.1.4.1.2.3.1	Implicit VR Little Endian Explicit VR Little Endian	1.2.840.10008.1.2 1.2.840.10008.1.2.1	SCP	Relational queires
Patient/Study Only Q/R Information Model – MOVE	1.2.840.10008.5.1.4.1.2.3.2	Implicit VR Little Endian Explicit VR Little Endian	1.2.840.10008.1.2 1.2.840.10008.1.2.1	SCP	Relational retrieve

If the Called AET is not corresponding to the actual Storage Server AET, it only will be accepted the Presentation Context for the Verification SOP Class.

### 1.3.2.2.4.1.3. SOP Specific Conformance

#### 1.3.2.2.4.1.3.1. Specific Conformance for Verification SOP Class

VidiStar DICOM Service/archive Storage Server provides standard conformance to the DICOM Verification Service Class as a SCP. The status code for the C-ECHO is described in the following table:

**Table 1.31. C-Echo Response Status Handling Behavior**

Service Status	Further Meaning	Error Code	Behavior
Success	Success	"0000"	The C-ECHO request is accepted

### 1.3.2.2.4.1.3.2. Specific Conformance for Query SOP Classes

The Query/Retrieve Server AE supports hierarchical and relational queries. There are no attributes always returned by default. Only those attributes requested in the query identifier are returned.

Query responses always return values from the Query/Retrieve Server database. Exported SOP Instances are always updated with the latest values kept in the database prior to export. Thus, a change in Patient demographic information will be contained in both the C-FIND Responses and any Composite SOP Instances exported to a C-MOVE Destination AE.

Patient Root Information Model: All required search keys on each of the four levels (Patient, Study, Series, and Image) are supported. However, the Patient ID (0010,0020) key must have at least a partial value if the Patient's Name (0010,0010) is not present in a Patient Level query.

Study Root Information Model: All the required search keys on each of the three levels (Study, Series, and Image) are supported. If no partial values are specified for Study attributes then either the Patient ID (0010,0020) key or the Patient's Name (0010,0010) must have at least a partial value specified.

Patient/Study Only Information Model: All the required search keys on the Patient and Study levels are supported. The Patient ID (0010,0020) key must be at least partially stated if the Patient's Name (0010,0010) is not present in a Patient Level query.

**Table 1.32. Patient Root C-FIND SCP Supported Elements**

Attribute Name	Tag	VR	Types of Matching
<b><i>SOP Common</i></b>			
Specific Character Set	0008,0005	CS	NONE
<b><i>Patient Level</i></b>			
Patient's Name	0010,0010	PN	S,*,U
Patient ID	0010,0020	LO	S,*,U
Issuer of Patient ID	0010,0021	LO	NONE
Patient's Birth Date	0010,0030	DA	S,U,R
Patient's Sex	0010,0040	CS	S,*,U
<b><i>Study Level</i></b>			
Study Instance UID	0020,000D	UI	S,L
Study ID	0020,0010	SH	S,*,U
Study Date	0008,0020	DA	S,U,R
Study Time	0008,0030	TM	S,U,R
Accession Number	0008,0050	SH	S,*,U
Referring Physician's Name	0008,0090	PN	S,*,U
Modalities In Study	0008,0061	CS	S,*,U
<b><i>Series Level</i></b>			
Series Instance UID	0020,000E	UI	S,L
Series Number	0020,0011	IS	S,*,U
Modality	0008,0060	CS	S,*,U
Performed Procedure Step Start Date	0040,0244	DA	S,U,R

Performed Procedure Step Start Time	0040,0245	TM	S,U,R
<i>Image Level</i>			
SOP Instance UID	0008,0018	UI	S,L
SOP Class UID	0008,0016	UI	S,L
Instance Number	0020,0013	IS	S,*,U
Completion Flag	0040,0A91	CS	S,*,U
Verification Flag	0040,0A93	CS	S,*,U

**Table 1.33. Study Root C-FIND SCP Supported Elements**

Attribute Name	Tag	VR	Types of Matching
<i>SOP Common</i>			
Specific Character Set	0008,0005	CS	NONE
<i>Study Level</i>			
Patient's Name	0010,0010	PN	S,*,U
Patient ID	0010,0020	LO	S,*,U
Issuer of Patient ID	0010,0021	LO	NONE
Patient's Birth Date	0010,0030	DA	S,U,R
Patient's Sex	0010,0040	CS	S,*,U
Study Instance UID	0020,000D	UI	S,L
Study ID	0020,0010	SH	S,*,U
Study Date	0008,0020	DA	S,U,R
Study Time	0008,0030	TM	S,U,R
Accession Number	0008,0050	SH	S,*,U
Referring Physician's Name	0008,0090	PN	S,*,U
Modalities In Study	0008,0061	CS	S,*,U
<i>Series Level</i>			
Series Instance UID	0020,000E	UI	S,L
Series Number	0020,0011	IS	S,*,U
Modality	0008,0060	CS	S,*,U
Performed Procedure Step Start Date	0040,0244	DA	S,U,R
Performed Procedure Step Start Time	0040,0245	TM	S,U,R
<i>Image Level</i>			
SOP Instance UID	0008,0018	UI	S,L
SOP Class UID	0008,0016	UI	S,L
Instance Number	0020,0013	IS	S,*,U
Completion Flag	0040,0A91	CS	S,*,U
Verification Flag	0040,0A93	CS	S,*,U



### Types of Matching:

The types of Matching supported by the C-FIND SCP. An "S" indicates the identifier attribute uses Single Value Matching, an "R" indicates Range Matching, an "\*" indicates wildcard matching, a 'U' indicates Universal Matching, and an 'L' indicates that UID lists are supported for matching. "NONE" indicates that no matching is supported, but that values for this Element are requested to be returned (i.e. universal matching).

**Table 1.34. VidiStar DICOM Service/archive Query/Retrieve Server C-FIND Response Status**

Service Status	Further Meaning	Error Code	Behavior
Success	Success	"0000"	Matching is complete. No final identifier is supplied
Error	Processing Failed	"0110"	This status is returned due to internal errors such as a processing failure response on an query of the internal database. The appropriate Status will be sent in the C-FIND Response. Error indication message is output to the Service Log.
Cancel	Matching terminated due to Cancel Request	"FE00"	The C-FIND SCU sent a Cancel Request. This has been acknowledged and the search for matches has been halted. Cancel indication message is output to the Service Log.
Pending	Matches are continuing and current match is supplied	"FF00"	Indicates that the search for further matches is continuing. This is returned when each successful match is returned and when further matches are forthcoming. Pending indication message is output to the Service Log.

### 1.3.2.2.4.1.3.3. Specific Conformance for Query SOP Classes

Exported SOP Instances are always updated with the latest values kept in the database prior to export.

**Table 1.35. VidiStar DICOM Service/archive Query/Retrieve Server C-MOVE Response Status**

Service Status	Further Meaning	Error Code	Behavior
Success	Success	"0000"	Matching is complete. No final identifier is supplied
Error	Processing Failure	"0110"	This status is returned due to internal errors such as a processing failure response on an query of the internal database. The appropriate Status will be sent in the C-MOVE Response. Error indication message is output to the Service Log.
Error	Unable to perform suboperations	"A702"	C-STORE sub-operations cannot be performed due to failure of an Association Request or a C-STORE Request. Error indication message is output to the Service Log.
Error	Move Destination unknown	"A801"	The Destination Application Entity named in the C-MOVE Request is unknown to Query/Retrieve SCP AE. Error indication message is output to the Service Log.
Error	Identifier does not match SOP Class	"A900"	The C-MOVE identifier contains invalid Elements or values, or is missing mandatory Elements or values for the specified SOP Class or retrieval level. Error indication message is output to the Service Log.

Error	Unable to process	"Cxxx"	The Move Destination AET is missing in the C-MOVE Request. Error indication message is output to the Service Log.
Pending	Matches are continuing and current match is supplied	"FF00"	Indicates that the search for further matches is continuing. This is returned when each successful match is returned and when further matches are forthcoming. Pending indication message is output to the Service Log.

Table 1.36. VidiStar DICOM Service/archive Query/Retrieve Server Service Communication Failure Behavior

Exception	Behavior
Timeout expiry for an expected DICOM Message Request (DIMSE level timeout). I.e. the Query/Retrieve Server SCP AE is waiting for the next C-FIND or CMOVE Request on an open Association but the timer expires.	The Association is aborted by issuing a DICOM AABORT. Error message is output to the Service Log.
Timeout expiry for an expected DICOM PDU or TCP/ IP packet (Low-level timeout). I.e. The Query/Retrieve Server AE is waiting for the next message PDU but the timer expires.	The Association is aborted by issuing a DICOM AABORT. Error message is output to the Service Log.
Association aborted by the SCU or the network layers indicate communication loss (i.e. low-level TCP/IP socket closure)	Error message is output to the Service Log.

### 1.3.2.3. VidiStar DICOM Service/archive Query/Retrieve User Application Entity Specification

Query/Retrieve SCU can be configured to be invoked on reception of a DICOM series. Then the Query/Retrieve SCU is used to query configured remote Query/Retrieve SCP for old studies done for just received patient. Then – if VidiStar does not have them stored – the studies are retrieved so in VidiStar there are all studies of given patient.

#### 1.3.2.3.1. SOP Classes

VidiStar DICOM Service/archive Query/Retrieve User Application Entity provides Standard Conformance to the following SOP Classes:

**Table 1.19. SOP Classes for VidiStar DICOM Service/archive Query/Retrieve Server AE**

SOP Class Name	SOP Class UID	SCU	SCP
Patient Root Query/Retrieve Information Model – FIND SOP Class	1.2.840.10008.5.1.4.1.2.1.1	Yes	No
Patient Root Query/Retrieve Information Model - MOVE SOP Class	1.2.840.10008.5.1.4.1.2.1.2	Yes	No
Patient/Study Only Query/Retrieve Info. Model - FIND SOP Class	1.2.840.10008.5.1.4.1.2.3.1	Yes	No
Patient/Study Only Query/Retrieve Info. Model - MOVE SOP Class	1.2.840.10008.5.1.4.1.2.3.2	Yes	No
Study Root Query/Retrieve Information Model - FIND SOP Class	1.2.840.10008.5.1.4.1.2.2.1	Yes	No
Study Root Query/Retrieve Information Model - MOVE SOP Class	1.2.840.10008.5.1.4.1.2.2.2	Yes	No

### 1.3.2.3.2. Association Establishment Policy

#### 1.3.2.3.2.1. General

The DICOM standard application context name for DICOM 3.0 is always accepted and proposed:

**Table 1.20. DICOM application context name for VidiStar DICOM Service Query/Retrieve User AE**

Application Context Name	1.2.840.10008.3.1.1.1
--------------------------	-----------------------

#### 1.3.2.3.2.2. Number of Associations

VidiStar DICOM Service/archive Query/Retrieve User can support multiple simultaneous Associations requested by peer AEs. Default is 10. This value can be configured through the attribute "MaxClients" in the Application Server configuration file (i.e. jboss-service.xml for JBoss application server).

**Table 1.21. Number of Associations accepted for VidiStar DICOM Service Query/Retrieve User AE**

Maximum number of simultaneous Associations	10 (Configurable)
---	-------------------

#### 1.3.2.3.2.3. Implementation Identifying Information

The implementation information for this Application Entity is:

**Table 1.23. DICOM Implementation Class and Version for VidiStar DICOM Service Query/Retrieve User AE**

Implementation Class UID	1.2.40.0.13.1.1
Implementation Version Name	VidiStar DICOM Service-1.1

### 1.3.2.3.3. Association Initiation Policy

The VidiStar DICOM Service/archive Query/Retrieve User AE logs errors in a log file. If association is rejected permanently, no further action is taken. If the association error was 'rejected-transient' attempts to establish the association will be made, the try count and grace periods are configurable.

#### 1.3.2.3.3.1. Activity – FIND SCU

##### 1.3.2.3.3.1.1. Description and Sequencing of Activities

1. One a study is received, VidiStar setups up a connection to pre-configured DICOM node
2. After the association is established, VidiStar sends a query to the remote DICOM node asking for all studies of just-received patient
3. The remote DICOM node returns query results
4. VidiStar closes the connection

### 1.3.2.3.3.1.1.1. Proposed Presentation Contexts

VidiStar DICOM Service/archive Query/Retrieve User will propose Presentation Contexts as shown in the following table:

Table 1.24. Proposed Presentation Contexts by the VidiStar DICOM Service/archive Query/Retrieve Server AEAbstract Syntax		Transfer Syntax		Role	Ext. Role
Name	UID	Name List	UID List		
Patient Root Query/Retrieve Information Model – FIND SOP Class	1.2.840.10008.5.1.4.1.2.1.1	Transfer Syntaxes for Non-Image Storage Services		SCU	None
Patient/Study Only Query/Retrieve Info. Model - FIND SOP Class	1.2.840.10008.5.1.4.1.2.3.1	Transfer Syntaxes for Non-Image Storage Services		SCU	None
Study Root Query/Retrieve Information Model - FIND SOP Class	1.2.840.10008.5.1.4.1.2.2.1	Transfer Syntaxes for Non-Image Storage Services		SCU	None
Patient Root Query/Retrieve Information Model – FIND SOP Class	1.2.840.10008.5.1.4.1.2.1.1	Transfer Syntaxes for Non-Image Storage Services		SCU	None

**Table 1.25. Proposed Transfer Syntaxes for Non-Image Storage Services**

Name	UID
Implicit VR Little Endian	1.2.840.10008.1.2
Explicit VR Little Endian	1.2.840.10008.1.2.1

### 1.3.2.3.3.1.1.1.1. SOP Specific Conformance

While all 4 SOP classes may be invoked from the administration console, VidiStar uses only Patient Root Query when Query/Retrieve SCU is used to bring old studies to VidiStar.

The following Query Keys can be used with VidiStar FIND SCU. For finding studies Query keys used are Patient ID, Patient Name, Patient's Birth Date. Returned keys are Study Instance UID.

**Table 1.32. Patient Root C-FIND SCP Supported Elements**

Attribute Name	Tag	VR	Types of Matching
<b>SOP Common</b>			
Specific Character Set	0008,0005	CS	NONE
<b>Patient Level</b>			
Patient's Name	0010,0010	PN	S,*,U
Patient ID	0010,0020	LO	S,*,U
Issuer of Patient ID	0010,0021	LO	NONE
Patient's Birth Date	0010,0030	DA	S,U,R
Patient's Sex	0010,0040	CS	S,*,U
<b>Study Level</b>			

Study Instance UID	0020,000D	UI	S,L
Study ID	0020,0010	SH	S,*,U
Study Date	0008,0020	DA	S,U,R
Study Time	0008,0030	TM	S,U,R
Accession Number	0008,0050	SH	S,*,U
Referring Physician's Name	0008,0090	PN	S,*,U
Modalities In Study	0008,0061	CS	S,*,U
<b>Series Level</b>			
Series Instance UID	0020,000E	UI	S,L
Series Number	0020,0011	IS	S,*,U
Modality	0008,0060	CS	S,*,U
Performed Procedure Step Start Date	0040,0244	DA	S,U,R
Performed Procedure Step Start Time	0040,0245	TM	S,U,R
<b>Image Level</b>			
SOP Instance UID	0008,0018	UI	S,L
SOP Class UID	0008,0016	UI	S,L
Instance Number	0020,0013	IS	S,*,U
Completion Flag	0040,0A91	CS	S,*,U
Verification Flag	0040,0A93	CS	S,*,U

**Table 1.33. Study Root C-FIND SCP Supported Elements**

Attribute Name	Tag	VR	Types of Matching
<b>SOP Common</b>			
Specific Character Set	0008,0005	CS	NONE
<b>Study Level</b>			
Patient's Name	0010,0010	PN	S,*,U
Patient ID	0010,0020	LO	S,*,U
Issuer of Patient ID	0010,0021	LO	NONE
Patient's Birth Date	0010,0030	DA	S,U,R
Patient's Sex	0010,0040	CS	S,*,U
Study Instance UID	0020,000D	UI	S,L
Study ID	0020,0010	SH	S,*,U
Study Date	0008,0020	DA	S,U,R
Study Time	0008,0030	TM	S,U,R
Accession Number	0008,0050	SH	S,*,U
Referring Physician's Name	0008,0090	PN	S,*,U
Modalities In Study	0008,0061	CS	S,*,U
<b>Series Level</b>			
Series Instance UID	0020,000E	UI	S,L
Series Number	0020,0011	IS	S,*,U
Modality	0008,0060	CS	S,*,U
Performed Procedure Step Start Date	0040,0244	DA	S,U,R
Performed Procedure Step Start Time	0040,0245	TM	S,U,R

**Image Level**

SOP Instance UID	0008,0018	UI	S,L
SOP Class UID	0008,0016	UI	S,L
Instance Number	0020,0013	IS	S,*,U
Completion Flag	0040,0A91	CS	S,*,U
Verification Flag	0040,0A93	CS	S,*,U

**Table 1.27. VidiStar DICOM Service/archive Query/Retrieve Server AE C-STORE Response Status Handling Behavior**

Service Status	Further Meaning	Error Code	Behavior
Success	Matching complete	"0000"	
Refused	Out of Resources	"A700"	Log, release association.
Failed	Cannot Understand	"A900", "C000-CFFF"	Log, release association.
Cancel	Matching aborted	"FE00"	Log, release association.
Pending	Matches are continuing	"FF00", "FF01"	Image transmission is considered successful. The appropriate PENDING or SUCCESS Status will be sent in the C-MOVE Response. Success indication message is output to the Service Log.

**Table 1.28. VidiStar DICOM Service/archive Query/Retrieve Server AE Communication Failure Behavior**

Exception	Behavior
Timeout expiry for an expected DICOM Message Request (DIMSE level timeout).	The Association is aborted by issuing a DICOM AABORT. The appropriate Status will be sent in the CMOVE Response. Error indication message is output to the Service Logs
Timeout expiry for an expected DICOM PDU or TCP/IP packet (Low-level timeout).	The Association is aborted by issuing a DICOM AABORT. The appropriate Status will be sent in the CMOVE Response. Error indication message is output to the Service Logs
Association A-ABORTed by the SCU or the network layers indicate communication loss (i.e. low-levelTCP/IP socket closure).	The TCP/IP Socket is closed. Error indication message is output to the Service Logs.

### **1.3.2.3.3.2. Activity – MOVE SCU**

#### **1.3.2.3.3.2.1. Description and Sequencing of Activities**

1. Once VidiStar finds old studies of given patient that are not yet stored in VidiStar database, VidiStar establishes an association with the external DICOM node
2. VidiStar sends a retrieve request to the external DICOM node
3. The external DICOM node sends the requested DICOM datasets
4. VidiStar closes the connection.



### 1.3.2.3.3.2.1.1. Proposed Presentation Contexts

VidiStar DICOM Service/archive Query/Retrieve User will propose Presentation Contexts as shown in the following table:

Table 1.24. Proposed Presentation Contexts by the VidiStar DICOM Service/archive Query/Retrieve Server AEAbstract Syntax		Transfer Syntax		Role	Ext. Role
Name	UID	Name List	UID List		
Patient Root Query/Retrieve Information Model - MOVE SOP Class	1.2.840.10008.5.1.4.1.2.1.2	Transfer Syntaxes for Non-Image Storage Services		SCU	None
Patient/Study Only Query/Retrieve Info. Model - MOVE SOP Class	1.2.840.10008.5.1.4.1.2.3.2	Transfer Syntaxes for Non-Image Storage Services		SCU	None
Study Root Query/Retrieve Information Model - MOVE SOP Class	1.2.840.10008.5.1.4.1.2.2.2	Transfer Syntaxes for Non-Image Storage Services		SCU	None
Patient Root Query/Retrieve Information Model - MOVE SOP Class	1.2.840.10008.5.1.4.1.2.1.2	Transfer Syntaxes for Non-Image Storage Services		SCU	None

**Table 1.25. Proposed Transfer Syntaxes for Non-Image Storage Services**

Name	UID
Implicit VR Little Endian	1.2.840.10008.1.2
Explicit VR Little Endian	1.2.840.10008.1.2.1

**Table 1.27. VidiStar DICOM Service/archive Query/Retrieve Server AE C-STORE Response Status Handling Behavior**

Service Status	Further Meaning	Error Code	Behavior
Success	Matching complete	"0000"	
Refused	Out of Resources	"A700"	Log, release association.
Failed	Cannot Understand	"A900", "C000- CFFF"	Log, release association.
Cancel	Matching aborted	"FE00"	Log, release association.

Pending	Matches are continuing	"FF00", "FF01"	Image transmission is considered successful. The appropriate PENDING or SUCCESS Status will be sent in the C-MOVE Response. Success indication message is output to the Service Log.
---------	------------------------	-------------------	--

**Table 1.28. VidiStar DICOM Service/archive Query/Retrieve Server AE Communication Failure Behavior**

Exception	Behavior
Timeout expiry for an expected DICOM Message Request (DIMSE level timeout).	The Association is aborted by issuing a DICOM AABORT. The appropriate Status will be sent in the CMOVE Response. Error indication message is output to the Service Logs
Timeout expiry for an expected DICOM PDU or TCP/IP packet (Low-level timeout).	The Association is aborted by issuing a DICOM AABORT. The appropriate Status will be sent in the CMOVE Response. Error indication message is output to the Service Logs
Association A-ABORTed by the SCU or the network layers indicate communication loss (i.e. low-levelTCP/IP socket closure).	The TCP/IP Socket is closed. Error indication message is output to the Service Logs.

#### **1.3.2.3.4. Association Acceptance Policy**

VidiStar Query/Retrieve SCU does not accept any associations.

## 1.3.2.4. VidiStar DICOM Service/archive Modality Worklist Server Application Entity Specification

### 1.3.2.4.1. SOP Classes

VidiStar DICOM Service/archive Modality Worklist Server Application Entity provides Standard Conformance to the following SOP Classes:

**Table 1.37. SOP Classes for VidiStar DICOM Service/archive Modality Worklist Server AE**

SOP Class Name	SOP Class UID	SCU	SCP
Verification SOP Class	1.2.840.10008.1.1	No	Yes
Modality Worklist Information Model - FIND	1.2.840.10008.5.1.4.31	No	Yes

### 1.3.2.4.2. Association Establishment Policy

#### 1.3.2.4.2.1. General

VidiStar DICOM Service/archive Modality Worklist Server AE can both accept and propose Association Requests. The Query/ Retrieve Server AE will accept Association Requests for the Verification and Query/Retrieve Services. It will propose Associations for Verification and Storage Services. The DICOM standard application context name for DICOM 3.0 is always accepted and proposed:

**Table 1.38. DICOM application context name for VidiStar DICOM Service/archive Modality Worklist Server AE**

Application Context Name	1.2.840.10008.3.1.1.1
--------------------------	-----------------------

### 1.3.2.4.2.2. Number of Associations

VidiStar DICOM Service/archive Modality Worklist Server can support multiple simultaneous Associations requested by peer AEs. Default is 10. This value can be configured through the attribute "MaxClients" in the Application Server configuration file (i.e. jboss-service.xml for JBoss application server).

**Table 1.39. Number of Associations accepted for VidiStar DICOM Service/archive Modality Worklist Server AE**

Maximum number of simultaneous Associations	10 (Configurable)
---	-------------------

### 1.3.2.4.2.3. Asynchronous Nature

VidiStar DICOM Service/archive Modality Worklist Server does not support asynchronous communication. Multiple outstanding transactions are not supported. It allows up to one invoked and one performed operation on an Association (it is synchronous). Asynchronous mode of operation is not supported.

**Table 1.40. Asynchronous Nature as SCP for VidiStar DICOM Service/archive Modality Worklist Server AE**

Maximum number of outstanding asynchronous transactions	1 (Not Configurable)
---	----------------------

### 1.3.2.4.2.4. Implementation Identifying Information

The implementation information for this Application Entity is:

**Table 1.41. DICOM Implementation Class and Version for VidiStar DICOM Service/archive Modality Worklist Server AE**

Implementation Class UID	1.2.40.0.13.1.1
Implementation Version Name	VidiStar DICOM Service-1.1

### 1.3.2.4.3. Association Initiation Policy

The Modality Worklist Server AE does not initiate Associations.

### 1.3.2.4.4. Association Acceptance Policy

#### 1.3.2.4.4.1. Activity - External Peer AE requests MWL query

#### 1.3.2.4.4.2. Description and Sequencing of Activities

The Modality Worklist Server AE accepts Associations only if they have valid Presentation Contexts. If none of the requested Presentation Contexts are accepted then the Association Request itself is rejected. It can be configured to only accept Associations from certain Application Entities.

When Modality Worklist SCUs query the Modality Worklist Server AE the queries run against the MWL items in the local database.

When an association has been established the Sequencing of Real-World Activities is as described in Section 1.3.1.3, “Sequencing of Real-World Activities”.

The Modality Worklist Server AE may reject Association attempts as shown in the table below. The Result, Source and Reason / Diag columns represent the values returned in the corresponding fields of an ASSO-CIATE-RJ PDU (see PS 3.8, Section 9.3.4).

**Table 1.42. Association Rejection Reasons Result Source Reason Description**

Result	Source	Reason	Description
2 - rejected transient	provider	2 - local limit exceeded	The (configurable) maximum number of simultaneous associations has been reached. An association request with the same parameters may succeed at a later time.
1 - rejected permanent	user	2 - application context name not supported	The Association request contained an unsupported Application Context Name. An association request with the same parameters will NOT succeed at a later time.
1 - rejected permanent	user	3 – calling AE title not recognized	The Association request contained an unrecognized Calling AE Title. An association request with the same parameters will NOT succeed at a later time unless configuration changes are made.

**1.3.2.3.4.3. Accepted Presentation Contexts**

**Table 1.43. Accepted Presentation Contexts for VidiStar DICOM Service/archive Query/Retrieve Server AE**

Abstract Syntax		Transfer Syntax		Role	Ext. Role
Name	UID	Name List	UID List		
Verification SOP Class	1.2.840.10008.1.1	Implicit VR Little Endian	1.2.840.10008.1.2	SCP	None
Modality Worklist Information Model – FIND	1.2.840.10008.5.1.4.31	Implicit VR Little Endian	1.2.840.10008.1.2	SCP	None
		Explicit VR Little Endian	1.2.840.10008.1.2.1		

### 1.3.2.4.4.4. SOP Specific Conformance

### 1.3.2.4.4.5. Specific Conformance for Verification SOP Class

VidiStar DICOM Service/archive Storage Server provides standard conformance to the DICOM Verification Service Class as a SCP. The status code for the C-ECHO is described in the following table:

**Table 1.44. C-Echo Response Status Handling Behavior**

Service Status	Further Meaning	Error Code	Behavior
Success	Success	"0000"	The C-ECHO request is accepted

### 1.3.2.4.4.6. Specific Conformance for Modality Worklist SOP Class

Return attributes depend on the information provided by the connected HIS/RIS. There are no attributes always returned by default. Only those attributes requested in the query identifier are returned. Query responses always return values from the Modality Worklist Server database.

**Table 1.45. Modality Worklist C-FIND SCP Supported Elements**

Attribute Name	Tag	VR	Types of Matching
Specific Character Set	0008,0005	CS	NONE
Scheduled station AE title	0040,0002	DA	S,R
Scheduled Procedure Step Start Time	0040,0003	TM	S,R
Scheduled Performing Physician's Name	0040,0006	PN	S,*
Modality	0008,0060	CS	S
Accession Number	0008,0050	SH	S
Patient's Name	0010,0010	PN	S,*
Patient's ID	0010,0020	LO	S
All Others			NONE

Types of Matching:

The types of Matching supported by the C-FIND SCP. An "S" indicates the identifier attribute uses Single Value Matching, an "R" indicates Range Matching, an "\*" indicates wildcard matching, a "U" indicates Universal Matching. "NONE" indicates that no matching is supported, but that values for this Element are requested to be returned.

### 1.3.2.4.4.6.1. Modality Worklist Server AE C-STORE Response

**Table 1.46. VidiStar DICOM Service/archive Modality Worklist Server C-STORE Response Status**

Service Status	Further Meaning	Error Code	Behavior
Success	Success	"0000"	Success indication message is output to the Service Log.
Error	Processing Failure	"0110"	This is treated as a permanent Failure. The appropriate Status will be sent in the C-FIND Response. Error indication message is output to the Service Log.

Canceled	Matching terminated due to cancel request	"FE00"	This status is returned if a Cancel Request is received from the SCU during the processing of a Modality Worklist request. A cancel indication message is output to the Service Log.
Pending	Matching is continuing	"FF00"	This status is returned with each matching response. A pending indication message is output to the Service Log.

### 1.3.2.4.4.6.2. Modality Server AE Storage Service Communication Failure Reasons

**Table 1.47. VidiStar DICOM Service/archive Modality Server Service Communication Failure Behavior**

Exception	Behavior
Association aborted by the SCU or the network layers indicate communication loss (i.e. low-level TCP/IP socket closure)	Error message is output to the Service Log.

### 1.3.2.5. WADO -RS Retrieve Study

Retrieves the set of DICOM instances associated with a given study unique identifier (UID). The response can be DICOM or bulk data depending on the "Accept" type, and is encapsulated in a multipart MIME response.

**Table 1.48. WADO-RS Retrieve Study options**

Options	Description
Request Parameters	StudyInstanceUID - The study instance UID for a single study
Data Types Supported (Accept Type)	<ul style="list-style-type: none"> <li>• multipart/related; type=application/dicom,</li> <li>• multipart/related; type={MediaType},</li> <li>• multipart/related; type=application/octet-stream</li> </ul>
SOP Class restrictions	Refer 1.3.2.1.1. SOP Classes

**Table 1.49. WADO-RS Retrieve Study Response Codes**

Code	Type	Description
200	Success	Returns a multipart response of JPEGs representing each image in the study
400	Error: Bad Request	The request sent by the client was syntactically incorrect
500	Error: Internal Server Error	Error while processing at the HTTP server which prevented it from fulfilling the request

### 1.3.2.6. WADO -RS Retrieve Series

Retrieves the set of DICOM instances associated with a given study and series UID. The response can be DICOM or bulk data depending on the "Accept" type, and is encapsulated in a multipart MIME response.

**Table 1.50. WADO-RS Retrieve Series options**

Options	Description
Request Parameters	StudyInstanceUID - The study instance UID for a single study SeriesInstanceUID - The series instance UID for a single series
Data Types Supported (Accept Type)	<ul style="list-style-type: none"> <li>• multipart/related; type=application/dicom,</li> <li>• multipart/related; type={MediaType},</li> <li>• multipart/related; type=application/octet-stream</li> </ul>
SOP Class restrictions	Refer 1.3.2.1.1. SOP Classes

**Table 1.51. WADO-RS Retrieve Series Response Codes**

Code	Type	Description
200	Success	Returns a multipart response of JPEGs representing each image in the series
400	Error: Bad Request	The request sent by the client was syntactically incorrect
500	Error: Internal Server Error	Error while processing at the HTTP server which prevented it from fulfilling the request

### 1.3.2.7. WADO -URI Retrieve Rendered Imaging Document Set

Retrieves the set of DICOM instances associated with a given study, series and Object / SOP UID. The response can be DICOM or bulk data depending on the "Accept" type, and is encapsulated in a multipart MIME response.

**Table 1.52. WADO-URI Parameters**

Name	Description
requestType	Determines the type of WADO request. It could be 'WADO' or 'WADOext'. Its REQUIRED.
studyUID	This parameter is REQUIRED. Should be the Study Instance UID
seriesUID	This parameter is REQUIRED. Should be the Series Instance UID
objectUID	This parameter is REQUIRED. Should be the SOP Instance UID.



frameNumber	This parameter is OPTIONAL. Specifies that the single frame with that number within a multi-frame image object shall be returned.
contentType	This parameter is OPTIONAL. Its value shall contain one or more media types
Rows	This parameter is OPTIONAL. The value shall be expressed as an integer, representing the image height to be returned
columns	This parameter is OPTIONAL. The value shall be expressed as an integer, representing the image width to be returned
transferSyntax	This parameter is OPTIONAL. It shall not be present if the 'contentType' is other than 'application/dicom'. It should be encoded as a UID string.
Region	This parameter is OPTIONAL. The value shall be expressed as a list of four positive decimal strings, separated by the ',' character, representing the region of the source images to be returned
codec	This parameter is OPTIONAL. Contains codec information
noPixelData	Its set as true / false based on pixel data is contained
serviceType	This parameter is REQUIRED if the 'requestType' is 'WADOExt'. It should be WFIND; retrieve of 'study info' (a private SOP class) to get meta information of a study.
Level	This parameter is REQUIRED if the 'requestType' is 'WADOExt'. Indicates the level of meta-info. Value could be IMAGE.
patientId	This is OPTIONAL. Holds the patient ID.

Note: When the requestType is 'WADOExt', only 'application/dicom' mime type is allowed and only 'explicit VR little endian' or 'deflated explicit VR little endian' transfer syntax are allowed.

**Table 1.53. WADO-URI Response Codes**

Code	Type	Description
200	Success	Returns a multipart response of JPEGs representing each image/region /meta-info based in the parameters set in the URI
400	Error: Bad Request	The request sent by the client was syntactically incorrect
500	Error: Internal Server Error	Error while processing at the HTTP server which prevented it from fulfilling the request

### 1.3.2.8. Retrieve Summary Information for Display

The Retrieve Information for Display (RID) Integration Profile provides simple and rapid read-only access to patient-centric clinical information that is located outside the user's current application but is important for better patient care. VidiStar RID interface retrieves a summary list of information/ reports that are part of a patient's clinical history (i.e., summary of lab reports, summary of radiology exam reports, 1665 etc.) with the intent of selecting a specific item off the list for subsequent retrieval as a persistent object via the Retrieve Document for Display Transaction

**Table 1.54. RID request parameters**

Name	Description
	REQUIRED, specifies what type of information shall be retrieved. Following options are supported.
requestType	SUMMARY Summary of all reports known to the Information Source
	SUMMARY-RADIOLOGY Summary of radiology reports
	SUMMARY-CARDIOLOGY Summary of cardiology reports
	SUMMARY-CARDIOLOGY-ECG Summary of cardiology ECG reports
patientID	REQUIRED, patient ID for which the data is required.
lowerDateTime	OPTIONAL, used to constrain the earliest date/time of creation of information.
upperDateTime	OPTIONAL, used to constrain the latest date/time of creation of information
mostRecentResults	REQUIRED, numeric value that indicates the number of most recent results to be included into the response, i.e., 1 indicates to provide the latest result.

**Table 1.55. RID Response Codes**

Code	Type	Description
200	Success	Returns the requested summary reports for the specified PatientID
400	Error: Bad Request	The request sent by the client was syntactically incorrect
404	Not Found	The requested resource is not available
500	Error: Internal Server Error	Error while processing at the HTTP server which prevented it from fulfilling the request
501	Not Implemented	The HTTP server does not support the functionality needed to fulfill the request

### 1.3.2.9. Retrieve Document for Display

The Retrieve Information for Display (RID) Integration Profile provides simple and rapid read-only access to patient-centric clinical information that is located outside the user's current application but is important for better patient care. VidiStar RID interface retrieves documents stored as part of a patient's clinical history

**Table 1.56. RID request parameters**

Name	Description
requestType	REQUIRED, specifies what type of information shall be retrieved. DOCUMENT should be specified.



### 1.3.3.1. Supported Communication Stacks

DICOM Upper Layer over TCP/IP is supported.

#### 1.3.3.1.1. TCP/IP Stack

VidiStar DICOM Service/archive inherits their TCP/IP stack from the installed Java Runtime Environment.

### 1.3.3.2. Physical Network Interface

VidiStar DICOM Service/archive is indifferent to the physical medium over which TCP/IP executes; it inherits this from the Java Runtime Environment.

## 1.3.4. Configuration

### 1.3.4.1. AE Title/Presentation Address Mapping

#### 1.3.4.1.1. Local AE Titles

The local AE Titles and TCP ports are configurable through web interface.

**Table 1.48. AE Title Configuration Table**

Application Entity	Default AE Title	Default TCP/IP Port
dcm4che/archive Storage Server	STORE_SCP	2350
dcm4che/archive Query/Retrieve Server	QR_SCP	2350
dcm4che/archive Modality Worklist Server	MWL_SCP	2350
dcm4che/archive MPPS Manager	MPPS_MGR	2350

#### 1.3.4.1.2. Remote AE Title

Remote AE Titles, TCP/IP Addresses and ports can be configured through web interface. In the default configuration, Association Requests with any Calling AET will be accepted.

### 1.3.4.2. Parameters

The following table shows the VidiStar DICOM Service configuration parameters relevant to DICOM communication. Refer to the VidiStar DICOM Service/archive Service Manual for details on general configuration capabilities.

**Table 1.49. Configuration Parameter Table**

Parameter	Configurable (Y/N)	Default Value
<i>General Parametes</i>		
Listening Port	Yes	2351

Maximum number of simultaneous Associations	Yes	10
Time-out waiting for A-ASSOCIATE RQ on open TCP/IP connection (ARTIM timeout)	Yes	5s

Parameter	Configurable (Y/N)	Default Value
Time-out waiting on an open association for the next message (DIMSE timeout)	Yes	no timeout
Time-out waiting for acceptance or rejection Response to an Association Open Request. (Application Level timeout)	No	no timeout
Time-out waiting on an open association for the next message after sending A-RELEASE RSP or A-ABORT RQ (Closing timeout)	Yes	500ms
Maximum PDU size the AE can receive	Yes	16352
Maximum PDU size the AE can send	No	65535
Pack Command and Data PDVs in one PDU	Yes	FALSE
Support for the Basic TLS Secure Transport Connection Profile	Yes	Off
Accepted TLS Ciphers	Yes	
<b><i>Storage Server AE</i></b>		
Accepted Called AETs	Yes	STORE_SCP
Accepted Calling AETs	Yes	any
List of DICOM AETs that identify the location from which composite object instance(s) received by this Storage Server may be retrieved on the network	Yes	QR_SCP
Storage Directory Path Prefix	Yes	/archive
Time-out waiting for the A-ASSOCIATE-AC PDU after transmission of the A-ASSOCIATE-RQ to open an association to the Storage Commitment SCU	Yes	5s
<b><i>Query/Retrieve Server AE</i></b>		
Accepted Called AETs	Yes	QR_SCP
Accepted Calling AETs	Yes	any
Send optional C-MOVE RSPs with Pending Status to the C-MOVE SCU during the retrieve process	Yes	TRUE
Time-out waiting for the A-ASSOCIATE-AC PDU after transmission of the A-ASSOCIATE-RQ to open an association to the Move Destination AE	Yes	5s
<b><i>Modality Worklist Server AE</i></b>		
Accepted Called AETs	Yes	MWL_SCP
Accepted Calling AETs	Yes	any
<b><i>MPPS Manager AE</i></b>		
Accepted Called AETs	Yes	MPPS_SCP
Accepted Calling AETs	Yes	any
MPPS Forward AET	Yes	-
Time-out waiting for the A-ASSOCIATE-AC PDU after transmission of the A-ASSOCIATE-RQ to open an association to the MPPS Forward Time-out waiting for the A-ASSOCIATE-AC PDU after transmission of the A-ASSOCIATE-RQ to open an association to the MPPS Forward SCP AE	Yes	5s

# 1.4. Media Interchange

## 1.4.1 Application Data Flow

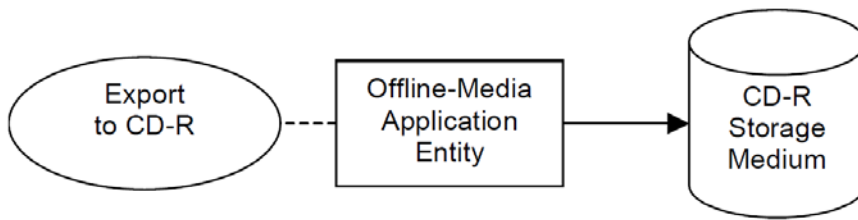


Figure 1: APPLICATION DATA

### FLOW DIAGRAM FOR MEDIA STORAGE

The Offline-Media Application Entity exports images and Presentation States to a CD-R Storage medium. It is associated with the local real-world activity “Export to CD-R”. “Export to CD-R” is performed upon user request for selected patients.

## 1.4.2 Functional Definition of AEs

### 1.4.2.1 Functional Definition of Offline-Media Application Entity

Activation of the “Export to CD-R” icon or menu entry will pass the currently selected patients, studies, series or instances (images or presentation states) to the Offline-Media Application Entity. The SOP Instances associated with the selection will be collected into one or more export jobs. The contents of each export job will be written to a single CD-R or DVD (depending on configuration) media image. Depending on the configuration this image may be automatically burned or just stored on the hard drive of the server.

### 1.4.3 Sequencing of Real-World Activities

At least one image must exist and be selected before the Offline-Media Application Entity can be invoked.

### 1.4.4 File Meta Information Options

The implementation information written to the File Meta Header in each file is:

Implementation Class UID	1.2.40.0.13.1.1
Implementation Version Name	dcm4che-1.3.11

## 1.4.2 AE SPECIFICATIONS

### 1.4.2.1 Offline-Media Application Entity Specification

The Offline-Media Application Entity provides standard conformance to the Media Storage Service Class. The Application Profiles and roles are listed below:

Application Profiles Supported	Real World Activity	Role
STD-GEN-CD	Export to CD-R	FSC

#### 1.4.2.1.1 File Meta Information for the Application Entity

The Source Application Entity Title included in the File Meta Header is configurable (see section 1.4.4).

#### 1.4.2.1.2 Real-World Activities

##### 1.4.2.1.2.1 Activity – Export to CD-R

The Offline-Media Application Entity acts as an FSC when requested to export SOP Instances from the local database to a CD-R medium. The contents of the export job will be written together with a corresponding

DICOMDIR to a single-session CDR. Writing in multi-session mode is not supported. The user can cancel an export job in the job queue.

#### 1.4.2.1.2.1.1 Media Storage Application Profiles

The Offline-Media Application Entity support the STD-GEN-CD Application Profile.

##### 1.4.2.1.2.1.1.1 Options

The Offline-Media Application Entity supports the SOP Classes and Transfer Syntaxes listed in the Table below:

Information Object Definition	SOP Class UID	Transfer Syntax	Transfer Syntax UID
Media Storage Directory Storage	1.2.840.10008.1.3.10	Explicit VR Little Endian	1.2.840.10008.1.2.1
Ultrasound Image Storage	1.2.840.10008.5.1.4.1.1.6.1	Explicit VR Little Endian Uncompressed	1.2.840.10008.1.2.1
Ultrasound Image Storage	1.2.840.10008.5.1.4.1.1.6.1	RLE Lossless Image Compression	1.2.840.10008.1.2.5
Ultrasound Image Storage	1.2.840.10008.5.1.4.1.1.6.1	JPEG Lossy, Baseline Sequential with Huffman Coding (Process 1)	1.2.840.10008.1.2.4.50
Ultrasound Multiframe Image Storage	1.2.840.10008.5.1.4.1.1.3.1	Explicit VR Little Endian Uncompressed	1.2.840.10008.1.2.1
Ultrasound Multiframe Image Storage	1.2.840.10008.5.1.4.1.1.3.1	RLE Lossless Image Compression	1.2.840.10008.1.2.5
Ultrasound Multiframe Image Storage	1.2.840.10008.5.1.4.1.1.3.1	JPEG Lossy, Baseline Sequential with Huffman Coding (Process 1)	1.2.840.10008.1.2.4.50

#### 1.4.3 AUGMENTED AND PRIVATE APPLICATION PROFILES

Vidistar does not support any augmented for private application profiles.

#### 1.4.4 MEDIA CONFIGURATION

All local applications use the AE Titles configured via the Service/Installation Tool. The Application Entity Titles configurable for Media Services are listed in the Table below:

Application Entity	Default AE Title
Offline-Media	CDWRITER

## **1.5. Support of Extended Character Sets**

VidiStar DICOM Service supports ISO\_IR 100 (ISO 8859-1 Latin 1) as an extended character set.

## **1.6. Security**

### **1.6.1. Security Profiles**

VidiStar DICOM Service/archive supports secure DICOM communication in conformance with the Basic TLS Secure Transport Connection Profile. At default configuration, the TLS option is deactivated.

### **1.6.2. Association Level Security**

VidiStar DICOM Service/archive can be configured to accept Association Requests from only a limited list of Calling AE Titles.

In the default configuration, Association requests with any Calling AET and any Called AET will be accepted. However, if the Called AET is not correspondent to any of the actual Storage Server AETs, only acceptance of the Presentation Context for Verification SOP Class will be returned in the Association Acceptance Response (ASSOCIATE AC).

### **1.6.3. Application Level Security**

VidiStar DICOM Service/archive web module can be configured to require user authentication in order to access to the user interface functionalities.

## **1.7. Annexes**

### **1.7.1. Created IOD Instances**

Does not create SOP Instances.

### **1.7.2. Usage of Attributes from received IOD's**

### **1.7.3. Attribute Mapping**

### **1.7.4. Coerced/Modified Fields**

Attribute coercion is configurable for IOD's received by the Storage Server. Attributes can either be mapped or may be filled with "fixed values" depending on the existence or the content(s) of one or more other Attributes. Patient Information, Patient Demographics and Study Information could either be modified manually using the web based system management tool or updated automatically by information received from HIS/RIS.

The coerced/modified Attribute values are provided when a remote Query/Retrieve SCU queries information or when SOP Instances are sent to a remote Storage SCP. Attribute Coercion will be indicated in the appropriate Service Response Status.



## 1.8. Appendix A. Implementation Statements of IHE Integration Profiles

VidiStar DICOM Service/archive has implemented the following DICOM service classes and HL7 messages:

- DICOM XY Image Storage SCU+SCP
- DICOM Grayscale Softcopy Presentation State Storage SCU+SCP
- DICOM Key Object Selection Document SCU+SCP
- DICOM Basic Text SR Storage SCU+SCP
- DICOM Enhanced SR Storage SCU+SCP
- DICOM Comprehensive SR Storage SCU+SCP
- DICOM Storage Commitment Push Model SOP Class SCP
- DICOM Modality Performed Procedure Step SOP Class SCU+SCP
- DICOM Study Root Query/Retrieve Information Model - FIND SCP
- DICOM Study Root Query/Retrieve Information Model - MOVE SCP
- HL7 ADT^A02 (Patient Transfer) message receive
- HL7 ADT^A03 (Patient Discharge) message receive
- HL7 ADT^A06 (Change an Outpatient to an Inpatient) message receive
- HL7 ADT^A07 (Change an Inpatient to an Outpatient) message receive
- HL7 ADT^A08 (Update Patient Information) message receive
- HL7 ADT^A40 (Merge Patient Internal ID) message receive
- HL7 ADT^A12 (Cancel Patient Transfer) message receive
- HL7 ADT^A13 (Cancel Patient Discharge) message receive
- HL7 ORM (Procedure Scheduled) message receive
- HL7 ORM (Procedure Updated) message receive

According to the following IHE Integration Profiles:

- Scheduled Workflow Integration Profile
- Patient Information Reconciliation Integration Profile
- Consistent Presentation of Images Integration Profile
- Access to Radiology Information Integration Profile
- Key Image Note Integration Profile
- Simple Image and Numeric Report Integration Profile
- Basic Security Integration Profile
- Reporting Workflow Profile
- Post-Processing Workflow Profile
- Retrieve Information for Display Integration Profile
- Audit Trail and Node Authentication

And supports the following IHE Actors:

- Image Manager/Image Archive
- Performed Procedure Step Manager
- Report Repository
- Secure Node