

## Comprehensive Ascent Program (CAP) for National Rural Health Association providers



## CT and MRI

See how our versatile medical imaging portfolio enables rural providers to bring the best equipment to their community.

CAP provides cost effective advanced imaging solutions with one low monthly payment.

## CAP delivers advanced Technology and Unparalleled Support in One Monthly Payment

Community hospitals in rural areas face many challenges and providing advanced medical imaging should not be one of them. CAP eliminates unbudgeted surprises and reduces costs over the lifetime of the equipment.

### All this included in the NRHA package:

- Industry's best 99% Uptime Guarantee
- CT includes Unlimited X-ray tube replacements
- Expert ACR accreditation support
- Sentinel™ Remote Service Diagnostics
- Reduced pricing on options
- Applicable operating software upgrades
- Unlimited on-site applications support
- Tuition Free Technologist training
- Hitachi CE accredited training modules
- Customized Advanced Marketing Program tailored to your community

## Hitachi -Your Gold Medal Partner

Hitachi was selected as a Gold Partner of the National Rural Health Association based on our expertise and knowledge of the rural health industry.

We demonstrate our commitment by offering the highest level of image quality, pricing and excellent customer service.

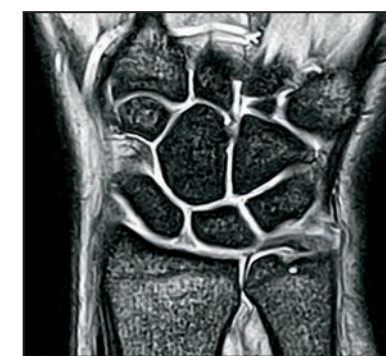
Customer-first philosophy compels us to make customer support the most important thing we offer.



MRI & CT:

- Echelon Oval 74cm Wide Bore 1.5T MRI
- Scenaria View 64/128 Slice CT
- Supria True 64 CT
- Supria Plus 16/32 Slice CT

# Partnership



# CT & MRI

## COMPREHENSIVE ASCENT PROGRAM

Enhancing the patient experience is a priority. Hitachi designs our diagnostic imaging equipment to accommodate a variety of body types as well as those patients with anxiety and claustrophobia.

Adding Hitachi's high performance equipment to your community helps reduce patient leakage to large hospital networks in urban areas.

Hitachi's SynergyDrive is the latest in complete efficiency and workflow engines ensuring the fastest patient throughput, best patient comfort and highest quality imaging.



### Scenaria View CT

- Comfortable and spacious, 80cm wide aperture
- Table accommodates 550lbs
- Lateral table shift +/- 10cm for easier and more accurate positioning
- Compact design fits into a small 285sq.ft. space
- Reduced examination times



### Echelon Oval MRI

- Widest 1.5T bore, 74cm
- Feet First Imaging, including brains
- Table accommodates 550lbs
- Table width 63cm
- Reduced Examination Times, including 5 minute brains
- Highest uniformity for detailed image quality

**Contact your Hitachi Sales Executive for details.**



**Hitachi Healthcare Americas**

1959 Summit Commerce Park, Twinsburg, OH 44087  
www.hitachihealthcare.com 800.800.3106

DM#141951 v2